

**DATASHEET**

**Cyclin B2 Rabbit Monoclonal Antibody(C1089)**

CAT. NO. AMA00701

**KEY FEATURES**

Target	Cyclin B2	Source / Host	Rabbit
Reactivity	Human	Clonality	Monoclonal
Applications	WB	Conjugation	Unconjugated
Form / Buffer	Liquid in PBS, pH 7.4, containing 50% glycerol, 0.2% BSA and 0.01% sodium azide.	Storage	at-20°C

**BACKGROUND**

Essential for the control of the cell cycle at the G2/M (mitosis) transition.

**APPLICATION**

To ensure optimal assay performance, AREX recommends conducting reagent titration tailored to each testing system for optimal detection results.

WB	1:500 - 1:1000
----	----------------

\*Results are sample-specific. Please refer to your local assay conditions and test parameters for reference.

**PRODUCT OVERVIEW**

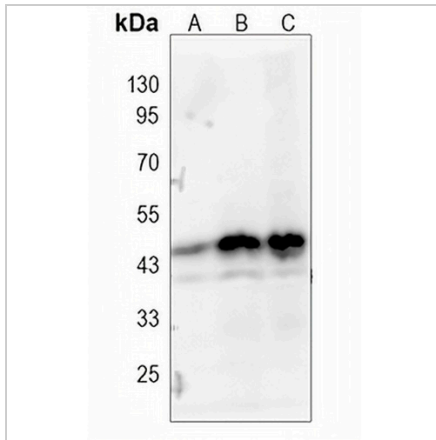
Description	Recombinant rabbit monoclonal antibody to Cyclin B2
Specificity	Recognizes endogenous levels of Cyclin B2 protein
Antibody Type	Primary antibody, Recombinant
Immunogen	KLH-conjugated synthetic peptide encompassing a sequence within human Cyclin B2. The exact sequence is proprietary.
Purification	The antibody was purified by immunogen affinity chromatography.
Molecular Weight	Predicted: 45 kD; Observed: 45 kD
Form/Buffer	Liquid in PBS, pH 7.4, containing 50% glycerol, 0.2% BSA and 0.01% sodium azide.
Alternative Names	G2/mitotic-specific cyclin-B2
Gene Symbol	CCNB2
Entrez Gene	9133(Human)
SwissProt	O95067(Human)

\*AREX continuously optimizes our products. Webpage content may not reflect the latest updates. For inquiries, please contact [info@arexbio.com](mailto:info@arexbio.com) or your local distributor.

\*Clone Number, Reactivity, Source/Host and Clonality can be found in the product name and Key Features section above.

**DATASHEET****Cyclin B2 Rabbit Monoclonal Antibody(C1089)**

CAT. NO. AMA00701

**DATA**

Western blot analysis of Cyclin B2 expression in HeLa (A), A549 (B), K562 (C) whole cell lysates. (Predicted band size: 45 kD; Observed band size: 45 kD)

**STORAGE**

Store at 4°C short term. For long term storage, store at -20°C, avoiding freeze/thaw cycles.

**NOTE**

For Research Use Only. Not for diagnostic, therapeutics, prophylactic or in vivo use.