

DATASHEET

TPPP Rabbit Monoclonal Antibody(C1108)

CAT. NO. AMA00720

KEY FEATURES

| | | | |
|---------------|--|---------------|--------------|
| Target | TPPP | Source / Host | Rabbit |
| Reactivity | Human, Mouse, Rat | Clonality | Monoclonal |
| Applications | WB | Conjugation | Unconjugated |
| Form / Buffer | Liquid in PBS, pH 7.4, containing 50% glycerol, 0.2% BSA and 0.01% sodium azide. | Storage | at-20°C |

BACKGROUND

Regulator of microtubule dynamics that plays a key role in myelination by promoting elongation of the myelin sheath . Acts as a microtubule nucleation factor in oligodendrocytes: specifically localizes to the postsynaptic Golgi apparatus region, also named Golgi outpost, and promotes microtubule nucleation, an important step for elongation of the myelin sheath . Required for both uniform polarized growth of distal microtubules as well as directing the branching of proximal processes . Shows magnesium-dependent GTPase activity; the role of the GTPase activity is unclear . In addition to microtubule nucleation activity, also involved in microtubule bundling and stabilization of existing microtubules, thereby maintaining the integrity of the microtubule network .

APPLICATION

To ensure optimal assay performance, AREX recommends conducting reagent titration tailored to each testing system for optimal detection results.

| | |
|----|----------------|
| WB | 1:500 - 1:1000 |
|----|----------------|

*Results are sample-specific. Please refer to your local assay conditions and test parameters for reference.

PRODUCT OVERVIEW

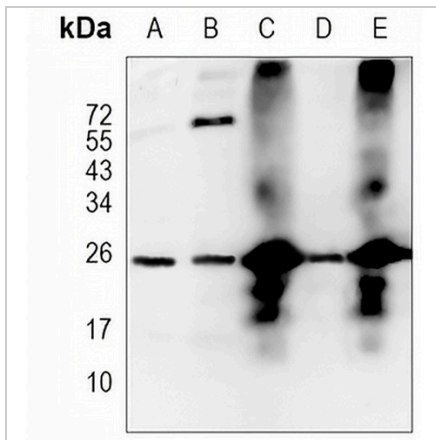
| | |
|-------------------|--|
| Description | Recombinant rabbit monoclonal antibody to TPPP |
| Specificity | Recognizes endogenous levels of TPPP protein |
| Antibody Type | Primary antibody, Recombinant |
| Immunogen | KLH-conjugated synthetic peptide encompassing a sequence within human TPPP. The exact sequence is proprietary. |
| Purification | The antibody was purified by immunogen affinity chromatography. |
| Molecular Weight | Predicted: 23 kD; Observed: 25 kD |
| Form/Buffer | Liquid in PBS, pH 7.4, containing 50% glycerol, 0.2% BSA and 0.01% sodium azide. |
| Alternative Names | TPPP1; Tubulin polymerization-promoting protein; TPPP; 25 kDa brain-specific protein; TPPP/p25; p24; p25-alpha |
| Gene Symbol | TPPP |
| Entrez Gene | 11076(Human); 72948(Mouse) |
| SwissProt | O94811(Human); Q7TQD2(Mouse) |

*AREX continuously optimizes our products. Webpage content may not reflect the latest updates. For inquiries, please contact info@arexbio.com or your local distributor.

*Clone Number, Reactivity, Source/Host and Clonality can be found in the product name and Key Features section above.

DATASHEET**TPPP Rabbit Monoclonal Antibody(C1108)**

CAT. NO. AMA00720

DATA

Western blot analysis of TPPP expression in Hela (A), MCF7 (B), mouse brain (C), mouse muscle (D), rat brain (E) whole cell lysates. (Predicted band size: 23 kD; Observed band size: 25 kD)

STORAGE

Store at 4°C short term. For long term storage, store at -20°C, avoiding freeze/thaw cycles.

NOTE

For Research Use Only. Not for diagnostic, therapeutics, prophylactic or in vivo use.