

DATASHEET

PGC1 alpha/beta Rabbit Monoclonal Antibody(C1109)

CAT. NO. AMA00721

KEY FEATURES

Target	PGC1 alpha/beta	Source / Host	Rabbit
Reactivity	Human, Mouse, Rat	Clonality	Monoclonal
Applications	WB, IHC	Conjugation	Unconjugated
Form / Buffer	Liquid in PBS, pH 7.4, containing 50% glycerol, 0.2% BSA and 0.01% sodium azide.	Storage	at-20°C

BACKGROUND

Transcriptional coactivator for steroid receptors and nuclear receptors . Greatly increases the transcriptional activity of PPARG and thyroid hormone receptor on the uncoupling protein promoter . Can regulate key mitochondrial genes that contribute to the program of adaptive thermogenesis . Plays an essential role in metabolic reprogramming in response to dietary availability through coordination of the expression of a wide array of genes involved in glucose and fatty acid metabolism . Acts as a key regulator of gluconeogenesis: stimulates hepatic gluconeogenesis by increasing the expression of gluconeogenic enzymes, and acting together with FOXO1 to promote the fasting gluconeogenic program . Induces the expression of PERM1 in the skeletal muscle in an ESRRA-dependent manner .

APPLICATION

To ensure optimal assay performance, AREX recommends conducting reagent titration tailored to each testing system for optimal detection results.

WB	1:500 - 1:1000
IHC	1:50 - 1:200

*Results are sample-specific. Please refer to your local assay conditions and test parameters for reference.

PRODUCT OVERVIEW

Description	Recombinant rabbit monoclonal antibody to PGC1 alpha/beta
Specificity	Recognizes endogenous levels of PGC1 alpha/beta protein
Antibody Type	Primary antibody, Recombinant
Immunogen	KLH-conjugated synthetic peptide encompassing a sequence within human PGC1 alpha/beta. The exact sequence is proprietary.
Purification	The antibody was purified by immunogen affinity chromatography.
Molecular Weight	Predicted: 91; Observed: 113 kD
Form/Buffer	Liquid in PBS, pH 7.4, containing 50% glycerol, 0.2% BSA and 0.01% sodium azide.
Alternative Names	LEM6; PGC1; PGC1A; PPARGC1; Peroxisome proliferator-activated receptor gamma coactivator 1-alpha; PGC-1-alpha; PPAR-gamma coactivator 1-alpha; PPARGC-1-alpha; Ligand effect modulator 6; PERC; PGC1; PGC1B; PPARGC1; Peroxisome proliferator-activated receptor gamma coactivator 1-beta; PGC-1-beta; PPAR-gamma coactivator 1-beta; PPARGC-1-beta; PGC-1-related estrogen receptor alpha coactivator
Gene Symbol	PPARGC1A; PPARGC1B
Entrez Gene	10891; 133522(Human); 19017(Mouse); 83516(Rat)
SwissProt	Q9UBK2; Q86YN6(Human); O70343(Mouse); Q9QYK2(Rat)

*AREX continuously optimizes our products. Webpage content may not reflect the latest updates. For inquiries, please contact info@arexbio.com or your local distributor.

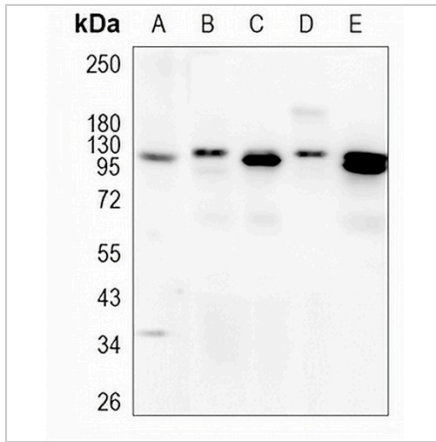
*Clone Number, Reactivity, Source/Host and Clonality can be found in the product name and Key Features section above.

DATASHEET

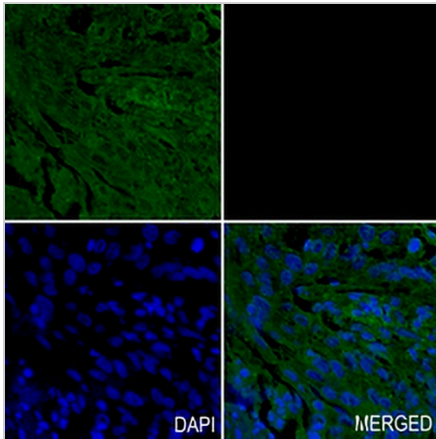
PGC1 alpha/beta Rabbit Monoclonal Antibody(C1109)

CAT. NO. AMA00721

DATA



Western blot analysis of PGC1 alpha/beta expression in HeLa (A), mouse liver (B), mouse kidney (C), rat liver (D), rat kidney (E) whole cell lysates. (Predicted band size: 91; 30; 89; 31; 14; 33; 77 kD; Observed band size: 113 kD)



Immunohistochemical analysis of PGC1 alpha/beta staining in human lung cancer formalin fixed paraffin embedded tissue section. The section was pre-treated using heat mediated antigen retrieval with sodium citrate buffer (pH 6.0). The section was then incubated with the antibody at room temperature and detected using an HRP conjugated compact polymer system. Tyramide-AREX® Fluor 488 (green) was used as the chromogen. The section was then counterstained with DAPI (blue).

STORAGE

Store at 4°C short term. For long term storage, store at -20°C, avoiding freeze/thaw cycles.

NOTE

For Research Use Only. Not for diagnostic, therapeutics, prophylactic or in vivo use.