

DATASHEET

GSTP1 Rabbit Monoclonal Antibody(C1117)

CAT. NO. AMA00729

KEY FEATURES

Target	GSTP1	Source / Host	Rabbit
Reactivity	Human, Mouse, Rat	Clonality	Monoclonal
Applications	WB	Conjugation	Unconjugated
Form / Buffer	Liquid in PBS, pH 7.4, containing 50% glycerol, 0.2% BSA and 0.01% sodium azide.	Storage	at-20°C

BACKGROUND

Catalyzes conjugation of reduced glutathione to a wide number of exogenous and endogenous hydrophobic electrophiles . Involved in the formation of glutathione conjugates of both prostaglandin A2 (PGA2) and prostaglandin J2 (PGJ2) . Participates in the formation of novel hepxilin regioisomers . Acts as a negative regulator of ferroptosis by mediating glutathione conjugation and detoxification of 4-hydroxynonenal (4-HNE) reactive aldehyde . Negatively regulates CDK5 activity via p25/p35 translocation to prevent neurodegeneration .

APPLICATION

To ensure optimal assay performance, AREX recommends conducting reagent titration tailored to each testing system for optimal detection results.

WB	1:500 - 1:1000
----	----------------

*Results are sample-specific. Please refer to your local assay conditions and test parameters for reference.

PRODUCT OVERVIEW

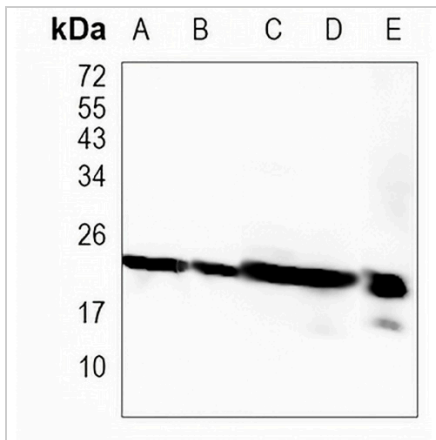
Description	Recombinant rabbit monoclonal antibody to GSTP1
Specificity	Recognizes endogenous levels of GSTP1 protein
Antibody Type	Primary antibody, Recombinant
Immunogen	KLH-conjugated synthetic peptide encompassing a sequence within human GSTP1. The exact sequence is proprietary.
Purification	The antibody was purified by immunogen affinity chromatography.
Molecular Weight	Predicted: 23 kD; Observed: 23 kD
Form/Buffer	Liquid in PBS, pH 7.4, containing 50% glycerol, 0.2% BSA and 0.01% sodium azide.
Alternative Names	FAEES3; GST3; Glutathione S-transferase P; GST class-pi; GSTP1-1
Gene Symbol	GSTP1
Entrez Gene	2950(Human); 14870(Mouse); 24426(Rat)
SwissProt	P09211(Human); P19157(Mouse); P04906(Rat)

*AREX continuously optimizes our products. Webpage content may not reflect the latest updates. For inquiries, please contact info@arexbio.com or your local distributor.

*Clone Number, Reactivity, Source/Host and Clonality can be found in the product name and Key Features section above.

DATASHEET**GSTP1 Rabbit Monoclonal Antibody(C1117)**

CAT. NO. AMA00729

DATA

Western blot analysis of GSTP1 expression in Hela (A), THP1 (B), mouse liver (C), mouse kidney (D), rat kidney (E) whole cell lysates. (Predicted band size: 23 kD; Observed band size: 23 kD)

STORAGE

Store at 4°C short term. For long term storage, store at -20°C, avoiding freeze/thaw cycles.

NOTE

For Research Use Only. Not for diagnostic, therapeutics, prophylactic or in vivo use.