

## DATASHEET

# Dia 1 Rabbit Monoclonal Antibody(C1131)

CAT. NO. AMA00743

### KEY FEATURES

Target	Dia 1	Source / Host	Rabbit
Reactivity	Human	Clonality	Monoclonal
Applications	WB, IHC	Conjugation	Unconjugated
Form / Buffer	Liquid in PBS, pH 7.4, containing 50% glycerol, 0.2% BSA and 0.01% sodium azide.	Storage	at-20°C

### BACKGROUND

Actin nucleation and elongation factor required for the assembly of F-actin structures, such as actin cables and stress fibers . Binds to the barbed end of the actin filament and slows down actin polymerization and depolymerization . Required for cytokinesis, and transcriptional activation of the serum response factor . DFR proteins couple Rho and Src tyrosine kinase during signaling and the regulation of actin dynamics . Functions as a scaffold protein for MAPRE1 and APC to stabilize microtubules and promote cell migration . Has neurite outgrowth promoting activity. Acts in a Rho-dependent manner to recruit PFY1 to the membrane . In hear cells, it may play a role in the regulation of actin polymerization in hair cells .

### APPLICATION

To ensure optimal assay performance, AREX recommends conducting reagent titration tailored to each testing system for optimal detection results.

WB	1:500 - 1:1000
IHC	1:50 - 1:200

\*Results are sample-specific. Please refer to your local assay conditions and test parameters for reference.

### PRODUCT OVERVIEW

Description	Recombinant rabbit monoclonal antibody to Dia 1
Specificity	Recognizes endogenous levels of Dia 1 protein
Antibody Type	Primary antibody, Recombinant
Immunogen	KLH-conjugated synthetic peptide encompassing a sequence within human Dia 1. The exact sequence is proprietary.
Purification	The antibody was purified by immunogen affinity chromatography.
Molecular Weight	Predicted: 141 kD; Observed: 155 kD
Form/Buffer	Liquid in PBS, pH 7.4, containing 50% glycerol, 0.2% BSA and 0.01% sodium azide.
Alternative Names	DIAP1; Protein diaphanous homolog 1; Diaphanous-related formin-1; DRF1
Gene Symbol	DIAPH1
Entrez Gene	1729(Human)
SwissProt	O60610(Human)

\*AREX continuously optimizes our products. Webpage content may not reflect the latest updates. For inquiries, please contact [info@arexbio.com](mailto:info@arexbio.com) or your local distributor.

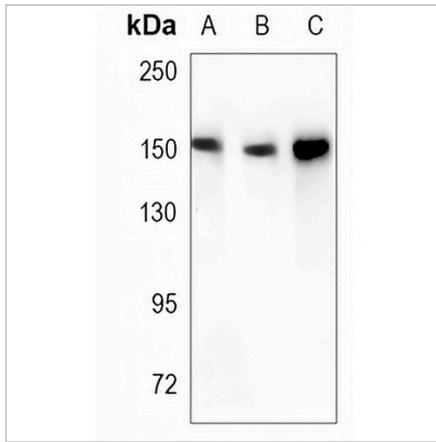
\*Clone Number, Reactivity, Source/Host and Clonality can be found in the product name and Key Features section above.

**DATASHEET**

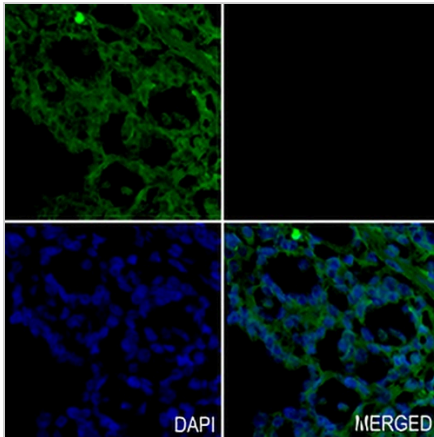
**Dia 1 Rabbit Monoclonal Antibody(C1131)**

CAT. NO. AMA00743

**DATA**



Western blot analysis of Dia 1 expression in Jurkat (A), HeLa (B), MCF7 (C) whole cell lysates. (Predicted band size: 141 kD; Observed band size: 155 kD)



Immunohistochemical analysis of Dia 1 staining in human ovarian formalin fixed paraffin embedded tissue section. The section was pre-treated using heat mediated antigen retrieval with sodium citrate buffer (pH 6.0). The section was then incubated with the antibody at room temperature and detected using an HRP conjugated compact polymer system. Tyramide-AREX® Fluor 488 (green) was used as the chromogen. The section was then counterstained with DAPI (blue).

**STORAGE**

Store at 4°C short term. For long term storage, store at -20°C, avoiding freeze/thaw cycles.

**NOTE**

For Research Use Only. Not for diagnostic, therapeutics, prophylactic or in vivo use.