

DATASHEET

Hemoglobin gamma-1/2 Rabbit Monoclonal Antibody(C1136)

CAT. NO. AMA00748

KEY FEATURES

Target	Hemoglobin gamma-1/2	Source / Host	Rabbit
Reactivity	Human	Clonality	Monoclonal
Applications	WB, IF/ICC	Conjugation	Unconjugated
Form / Buffer	Liquid in PBS, pH 7.4, containing 50% glycerol, 0.2% BSA and 0.01% sodium azide.	Storage	at-20°C

BACKGROUND

Gamma chains make up the fetal hemoglobin F, in combination with alpha chains.

APPLICATION

To ensure optimal assay performance, AREX recommends conducting reagent titration tailored to each testing system for optimal detection results.

WB	1:500 - 1:1000
IF/ICC	1:50 - 1:200

*Results are sample-specific. Please refer to your local assay conditions and test parameters for reference.

PRODUCT OVERVIEW

Description	Recombinant rabbit monoclonal antibody to Hemoglobin gamma-1/2
Specificity	Recognizes endogenous levels of Hemoglobin gamma-1/2 protein
Antibody Type	Primary antibody, Recombinant
Immunogen	KLH-conjugated synthetic peptide encompassing a sequence within human Hemoglobin gamma-1/2. The exact sequence is proprietary.
Purification	The antibody was purified by immunogen affinity chromatography.
Molecular Weight	Predicted: 16 kD; Observed: 12 kD
Form/Buffer	Liquid in PBS, pH 7.4, containing 50% glycerol, 0.2% BSA and 0.01% sodium azide.
Alternative Names	Hemoglobin subunit gamma-1; Gamma-1-globin; Hb F Agamma; Hemoglobin gamma-1 chain; Hemoglobin gamma-A chain; Hemoglobin subunit gamma-2; Gamma-2-globin; Hb F Ggamma; Hemoglobin gamma-2 chain; Hemoglobin gamma-G chain
Gene Symbol	HBG1; HBG2
Entrez Gene	3047; 3048(Human)
SwissProt	P69891; P69892(Human)

*AREX continuously optimizes our products. Webpage content may not reflect the latest updates. For inquiries, please contact info@arexbio.com or your local distributor.

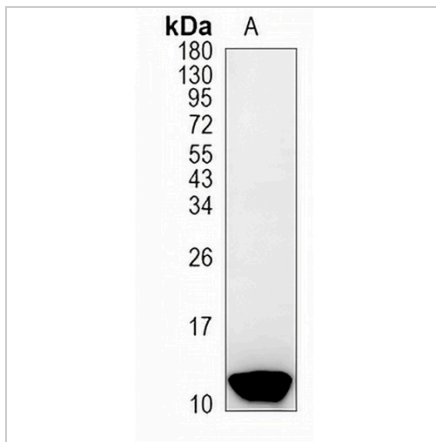
*Clone Number, Reactivity, Source/Host and Clonality can be found in the product name and Key Features section above.

DATASHEET

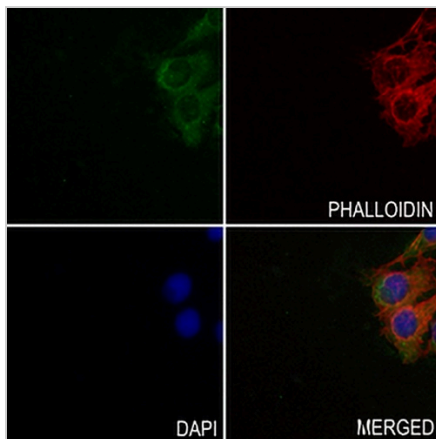
Hemoglobin gamma-1/2 Rabbit Monoclonal Antibody(C1136)

CAT. NO. AMA00748

DATA



Western blot analysis of Hemoglobin gamma-1/2 expression in K562 (A) whole cell lysates. (Predicted band size: 16 kD; Observed band size: 12 kD)



Immunofluorescent analysis of Hemoglobin gamma-1/2 staining in COS7 cells. Formalin-fixed cells were permeabilized with 0.1% Triton X-100 in TBS for 5-10 minutes and blocked with 3% BSA-PBS for 30 minutes at room temperature. Cells were probed with the primary antibody in 3% BSA-PBS and incubated overnight at 4 °C in a humidified chamber. Cells were washed with PBST and incubated with an AREX® Fluor 488 - conjugated secondary antibody (green) in PBS at room temperature in the dark. Phalloidin - AREX® Fluor 594 was used to stain Actin filaments (red). DAPI was used to stain the cell nuclei (blue).

STORAGE

Store at 4°C short term. For long term storage, store at -20°C, avoiding freeze/thaw cycles.

NOTE

For Research Use Only. Not for diagnostic, therapeutics, prophylactic or in vivo use.