

DATASHEET

PSMB9 Rabbit Monoclonal Antibody(C1149)

CAT. NO. AMA00761

KEY FEATURES

Target	PSMB9	Source / Host	Rabbit
Reactivity	Human, Mouse, Rat	Clonality	Monoclonal
Applications	WB	Conjugation	Unconjugated
Form / Buffer	Liquid in PBS, pH 7.4, containing 50% glycerol, 0.2% BSA and 0.01% sodium azide.	Storage	at-20°C

BACKGROUND

The proteasome is a multicatalytic proteinase complex which is characterized by its ability to cleave peptides with Arg, Phe, Tyr, Leu, and Glu adjacent to the leaving group at neutral or slightly basic pH . The proteasome has an ATP-dependent proteolytic activity. This subunit is involved in antigen processing to generate class I binding peptides. Replacement of PSMB6 by PSMB9 increases the capacity of the immunoproteasome to cleave model peptides after hydrophobic and basic residues.

APPLICATION

To ensure optimal assay performance, AREX recommends conducting reagent titration tailored to each testing system for optimal detection results.

WB	1:500 - 1:1000
----	----------------

*Results are sample-specific. Please refer to your local assay conditions and test parameters for reference.

PRODUCT OVERVIEW

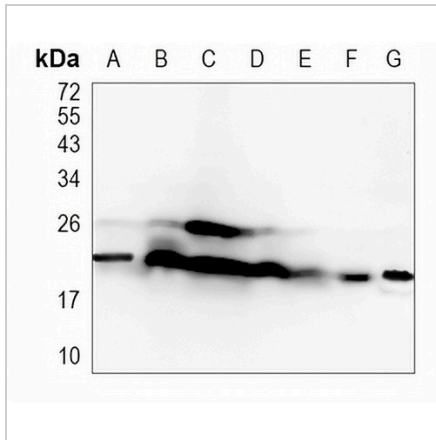
Description	Recombinant rabbit monoclonal antibody to PSMB9
Specificity	Recognizes endogenous levels of PSMB9 protein
Antibody Type	Primary antibody, Recombinant
Immunogen	KLH-conjugated synthetic peptide encompassing a sequence within human PSMB9. The exact sequence is proprietary.
Purification	The antibody was purified by immunogen affinity chromatography.
Molecular Weight	Predicted: 23 kD; Observed: 21 kD
Form/Buffer	Liquid in PBS, pH 7.4, containing 50% glycerol, 0.2% BSA and 0.01% sodium azide.
Alternative Names	LMP2; PSMB6i; RING12; Proteasome subunit beta type-9; Low molecular mass protein 2; Macropain chain 7; Multicatalytic endopeptidase complex chain 7; Proteasome chain 7; Proteasome subunit beta-1i; Really interesting new gene 12 protein
Gene Symbol	PSMB9
Entrez Gene	5698(Human); 16912(Mouse); 24967(Rat)
SwissProt	P28065(Human); P28076(Mouse); P28077(Rat)

*AREX continuously optimizes our products. Webpage content may not reflect the latest updates. For inquiries, please contact info@arexbio.com or your local distributor.

*Clone Number, Reactivity, Source/Host and Clonality can be found in the product name and Key Features section above.

DATASHEET**PSMB9 Rabbit Monoclonal Antibody(C1149)**

CAT. NO. AMA00761

DATA

Western blot analysis of PSMB9 expression in K562 (A), Jurkat (B), THP1 (C), mouse liver (D), mouse kidney (E), rat liver (F), rat kidney (G) whole cell lysates. (Predicted band size: 23 kD; Observed band size: 21 kD)

STORAGE

Store at 4°C short term. For long term storage, store at -20°C, avoiding freeze/thaw cycles.

NOTE

For Research Use Only. Not for diagnostic, therapeutics, prophylactic or in vivo use.