

DATASHEET

TLF Rabbit Monoclonal Antibody(C1150)

CAT. NO. AMA00762

KEY FEATURES

Target	TLF	Source / Host	Rabbit
Reactivity	Human	Clonality	Monoclonal
Applications	WB	Conjugation	Unconjugated
Form / Buffer	Liquid in PBS, pH 7.4, containing 50% glycerol, 0.2% BSA and 0.01% sodium azide.	Storage	at-20°C

BACKGROUND

Part of a specialized transcription system that mediates the transcription of most ribosomal proteins through the 5'-TCT-3' motif which is a core promoter element at these genes. Seems to also mediate the transcription of NF1. Does not bind the TATA box.

APPLICATION

To ensure optimal assay performance, AREX recommends conducting reagent titration tailored to each testing system for optimal detection results.

WB	1:500 - 1:1000
----	----------------

*Results are sample-specific. Please refer to your local assay conditions and test parameters for reference.

PRODUCT OVERVIEW

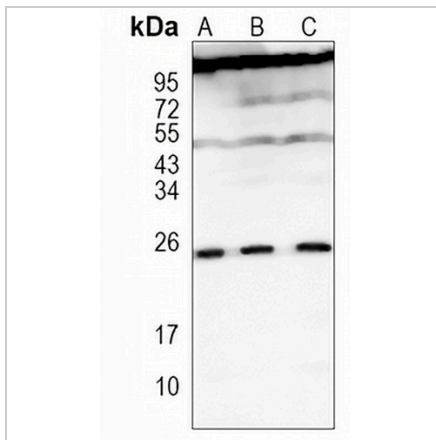
Description	Recombinant rabbit monoclonal antibody to TLF
Specificity	Recognizes endogenous levels of TLF protein
Antibody Type	Primary antibody, Recombinant
Immunogen	KLH-conjugated synthetic peptide encompassing a sequence within human TLF. The exact sequence is proprietary.
Purification	The antibody was purified by immunogen affinity chromatography.
Molecular Weight	Predicted: 20 kD; Observed: 23 kD
Form/Buffer	Liquid in PBS, pH 7.4, containing 50% glycerol, 0.2% BSA and 0.01% sodium azide.
Alternative Names	TLF; TLP; TLP21; TRF2; TRP; TATA box-binding protein-like protein 1; TBP-like protein 1; 21 kDa TBP-like protein; Second TBP of unique DNA protein; STUD; TATA box-binding protein-related factor 2; TBP-related factor 2; TBP-like factor; TBP-related protein
Gene Symbol	TBPL1
Entrez Gene	9519(Human)
SwissProt	P62380(Human)

*AREX continuously optimizes our products. Webpage content may not reflect the latest updates. For inquiries, please contact info@arexbio.com or your local distributor.

*Clone Number, Reactivity, Source/Host and Clonality can be found in the product name and Key Features section above.

DATASHEET**TLF Rabbit Monoclonal Antibody(C1150)**

CAT. NO. AMA00762

DATA

Western blot analysis of TLF expression in K562 (A), MCF7 (B), A549 (C) whole cell lysates. (Predicted band size: 20 kD; Observed band size: 23 kD)

STORAGE

Store at 4°C short term. For long term storage, store at -20°C, avoiding freeze/thaw cycles.

NOTE

For Research Use Only. Not for diagnostic, therapeutics, prophylactic or in vivo use.