

DATASHEET

nm23-H2 Rabbit Monoclonal Antibody(C1181)

CAT. NO. AMA00793

KEY FEATURES

Target	nm23-H2	Source / Host	Rabbit
Reactivity	Human, Mouse, Rat	Clonality	Monoclonal
Applications	WB, IHC	Conjugation	Unconjugated
Form / Buffer	Liquid in PBS, pH 7.4, containing 50% glycerol, 0.2% BSA and 0.01% sodium azide.	Storage	at-20°C

BACKGROUND

Catalyzes the transfer of a gamma-phosphoryl group from a nucleoside triphosphate, mainly ATP, to a nucleoside diphosphate via a ping-pong mechanism involving a phosphohistidine intermediate, therefore contributing to the nucleoside triphosphate homeostasis . Also functions as a histidine protein kinase by transferring the phosphoryl group from the phosphohistidine intermediate to a histidine residue in target proteins . Phosphorylates the GNB1 subunit of heterotrimeric G proteins at 'His-266', generating a high-energy phosphate group that promotes GTP formation and enables receptor-independent activation of heterotrimeric G proteins .

APPLICATION

To ensure optimal assay performance, AREX recommends conducting reagent titration tailored to each testing system for optimal detection results.

WB	1:500 - 1:1000
IHC	1:50 - 1:200

*Results are sample-specific. Please refer to your local assay conditions and test parameters for reference.

PRODUCT OVERVIEW

Description	Recombinant rabbit monoclonal antibody to nm23-H2
Specificity	Recognizes endogenous levels of nm23-H2 protein
Antibody Type	Primary antibody, Recombinant
Immunogen	KLH-conjugated synthetic peptide encompassing a sequence within human nm23-H2. The exact sequence is proprietary.
Purification	The antibody was purified by immunogen affinity chromatography.
Molecular Weight	Predicted: 17 kD; Observed: 17 kD
Form/Buffer	Liquid in PBS, pH 7.4, containing 50% glycerol, 0.2% BSA and 0.01% sodium azide.
Alternative Names	NM23B; Nucleoside diphosphate kinase B; NDK B; NDP kinase B; C-myc purine-binding transcription factor PUF; Histidine protein kinase NDKB; nm23-H2
Gene Symbol	NME2
Entrez Gene	4831; 654364(Human); 18103(Mouse); 83782(Rat)
SwissProt	P22392(Human); Q01768(Mouse); P19804(Rat)

*AREX continuously optimizes our products. Webpage content may not reflect the latest updates. For inquiries, please contact info@arexbio.com or your local distributor.

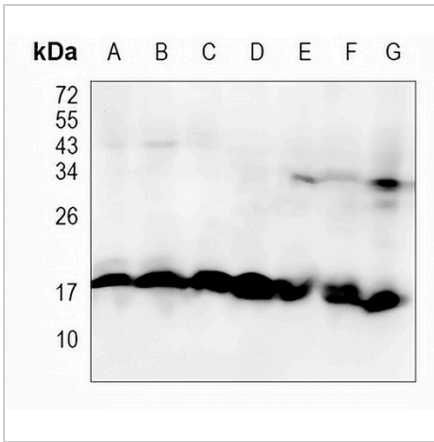
*Clone Number, Reactivity, Source/Host and Clonality can be found in the product name and Key Features section above.

DATASHEET

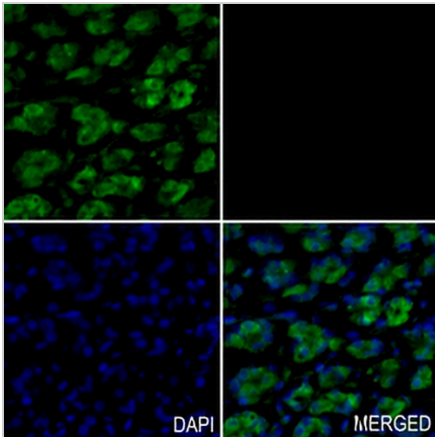
nm23-H2 Rabbit Monoclonal Antibody(C1181)

CAT. NO. AMA00793

DATA



Western blot analysis of nm23-H2 expression in MCF7 (A), PC3 (B), HeLa (C), mouse liver (D), mouse kidney (E), rat liver (F), rat kidney (G) whole cell lysates. (Predicted band size: 17 kD; Observed band size: 17 kD)



Immunohistochemical analysis of nm23-H2 staining in human stomach cancer formalin fixed paraffin embedded tissue section. The section was pre-treated using heat mediated antigen retrieval with sodium citrate buffer (pH 6.0). The section was then incubated with the antibody at room temperature and detected using an HRP conjugated compact polymer system. Tyramide-AREX® Fluor 488 (green) was used as the chromogen. The section was then counterstained with DAPI (blue).

STORAGE

Store at 4°C short term. For long term storage, store at -20°C, avoiding freeze/thaw cycles.

NOTE

For Research Use Only. Not for diagnostic, therapeutics, prophylactic or in vivo use.