

## DATASHEET

# RBM8A Rabbit Monoclonal Antibody(C1182)

CAT. NO. AMA00794

### KEY FEATURES

Target	RBM8A	Source / Host	Rabbit
Reactivity	Human, Mouse, Rat	Clonality	Monoclonal
Applications	WB	Conjugation	Unconjugated
Form / Buffer	Liquid in PBS, pH 7.4, containing 50% glycerol, 0.2% BSA and 0.01% sodium azide.	Storage	at-20°C

### BACKGROUND

Required for pre-mRNA splicing as component of the spliceosome . Core component of the splicing-dependent multiprotein exon junction complex (EJC) deposited at splice junctions on mRNAs. The EJC is a dynamic structure consisting of core proteins and several peripheral nuclear and cytoplasmic associated factors that join the complex only transiently either during EJC assembly or during subsequent mRNA metabolism. The EJC marks the position of the exon-exon junction in the mature mRNA for the gene expression machinery and the core components remain bound to spliced mRNAs throughout all stages of mRNA metabolism thereby influencing downstream processes including nuclear mRNA export, subcellular mRNA localization, translation efficiency and nonsense-mediated mRNA decay (NMD).

### APPLICATION

To ensure optimal assay performance, AREX recommends conducting reagent titration tailored to each testing system for optimal detection results.

WB	1:500 - 1:1000
----	----------------

\*Results are sample-specific. Please refer to your local assay conditions and test parameters for reference.

### PRODUCT OVERVIEW

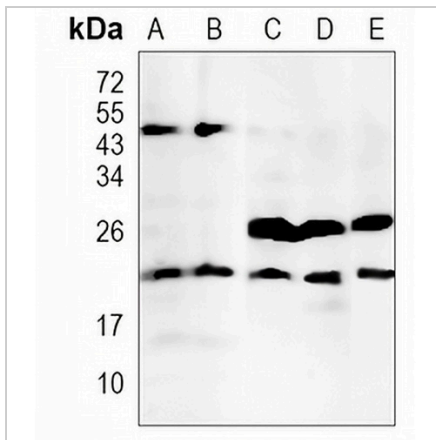
Description	Recombinant rabbit monoclonal antibody to RBM8A
Specificity	Recognizes endogenous levels of RBM8A protein
Antibody Type	Primary antibody, Recombinant
Immunogen	KLH-conjugated synthetic peptide encompassing a sequence within human RBM8A. The exact sequence is proprietary.
Purification	The antibody was purified by immunogen affinity chromatography.
Molecular Weight	Predicted: 19 kD; Observed: 21 kD
Form/Buffer	Liquid in PBS, pH 7.4, containing 50% glycerol, 0.2% BSA and 0.01% sodium azide.
Alternative Names	RBM8; RNA-binding protein 8A; Binder of OVCA1-1; BOV-1; RNA-binding motif protein 8A; RNA-binding protein Y14; Ribonucleoprotein RBM8A
Gene Symbol	RBM8A
Entrez Gene	9939(Human); 60365(Mouse); 295284(Rat)
SwissProt	Q9Y5S9(Human); Q9CWZ3(Mouse); Q27W01(Rat)

\*AREX continuously optimizes our products. Webpage content may not reflect the latest updates. For inquiries, please contact [info@arexbio.com](mailto:info@arexbio.com) or your local distributor.

\*Clone Number, Reactivity, Source/Host and Clonality can be found in the product name and Key Features section above.

**DATASHEET****RBM8A Rabbit Monoclonal Antibody(C1182)**

CAT. NO. AMA00794

**DATA**

Western blot analysis of RBM8A expression in MCF7 (A), PC3 (B), mouse liver (C), mouse kidney (D), rat kidney (E) whole cell lysates. (Predicted band size: 19 kD; Observed band size: 21 kD)

**STORAGE**

Store at 4°C short term. For long term storage, store at -20°C, avoiding freeze/thaw cycles.

**NOTE**

For Research Use Only. Not for diagnostic, therapeutics, prophylactic or in vivo use.