

DATASHEET

MRAS Rabbit Monoclonal Antibody(C1201)

CAT. NO. AMA00813

KEY FEATURES

Target	MRAS	Source / Host	Rabbit
Reactivity	Human, Mouse, Rat	Clonality	Monoclonal
Applications	WB	Conjugation	Unconjugated
Form / Buffer	Liquid in PBS, pH 7.4, containing 50% glycerol, 0.2% BSA and 0.01% sodium azide.	Storage	at-20°C

BACKGROUND

Signal transducer in the Ras-MAPK signaling pathway that regulates cell proliferation and survival . Core component of the SHOC2-MRAS-PP1c (SMP) holophosphatase complex that regulates the MAPK pathway activation . The formation of the SMP complex only occurs when MRAS is GTP-bound . MRAS has low intrinsic GTPase activity and may require additional factors for activation . The SMP complex specifically dephosphorylates the inhibitory phosphorylation at 'Ser-259' of RAF1 kinase, 'Ser-365' of BRAF kinase and 'Ser-214' of ARAF kinase, stimulating their kinase activities .

APPLICATION

To ensure optimal assay performance, AREX recommends conducting reagent titration tailored to each testing system for optimal detection results.

WB	1:500 - 1:1000
----	----------------

*Results are sample-specific. Please refer to your local assay conditions and test parameters for reference.

PRODUCT OVERVIEW

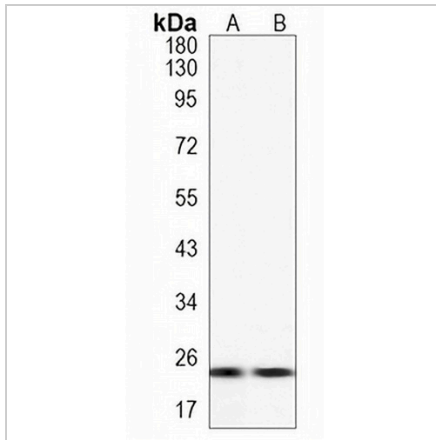
Description	Recombinant rabbit monoclonal antibody to MRAS
Specificity	Recognizes endogenous levels of MRAS protein
Antibody Type	Primary antibody, Recombinant
Immunogen	KLH-conjugated synthetic peptide encompassing a sequence within human MRAS. The exact sequence is proprietary.
Purification	The antibody was purified by immunogen affinity chromatography.
Molecular Weight	Predicted: 23 kD; Observed: 24 kD
Form/Buffer	Liquid in PBS, pH 7.4, containing 50% glycerol, 0.2% BSA and 0.01% sodium azide.
Alternative Names	RRAS3; Ras-related protein M-Ras; Ras-related protein R-Ras3
Gene Symbol	MRAS
Entrez Gene	22808(Human); 17532(Mouse)
SwissProt	O14807(Human); O08989(Mouse); P97538(Rat)

*AREX continuously optimizes our products. Webpage content may not reflect the latest updates. For inquiries, please contact info@arexbio.com or your local distributor.

*Clone Number, Reactivity, Source/Host and Clonality can be found in the product name and Key Features section above.

DATASHEET**MRAS Rabbit Monoclonal Antibody(C1201)**

CAT. NO. AMA00813

DATA

Western blot analysis of MRAS expression in mouse kidney (A), rat kidney (B) whole cell lysates. (Predicted band size: 23 kD; Observed band size: 24 kD)

STORAGE

Store at 4°C short term. For long term storage, store at -20°C, avoiding freeze/thaw cycles.

NOTE

For Research Use Only. Not for diagnostic, therapeutics, prophylactic or in vivo use.