

**DATASHEET**

**MYF5 Rabbit Monoclonal Antibody(C1205)**

CAT. NO. AMA00817

**KEY FEATURES**

|               |  |               |              |
|---------------|--|---------------|--------------|
| Target        | MYF5   | Source / Host | Rabbit       |
| Reactivity    | Human, Mouse   | Clonality     | Monoclonal   |
| Applications  | WB   | Conjugation   | Unconjugated |
| Form / Buffer | Liquid in PBS, pH 7.4, containing 50% glycerol, 0.2% BSA and 0.01% sodium azide. | Storage       | at-20°C      |

**BACKGROUND**

Transcriptional activator that promotes transcription of muscle-specific target genes and plays a role in muscle differentiation . Together with MYOG and MYOD1, co-occupies muscle-specific gene promoter core region during myogenesis. Induces fibroblasts to differentiate into myoblasts. Probable sequence specific DNA-binding protein.

**APPLICATION**

To ensure optimal assay performance, AREX recommends conducting reagent titration tailored to each testing system for optimal detection results.

|    |                |
|----|----------------|
| WB | 1:500 - 1:1000 |
|----|----------------|

\*Results are sample-specific. Please refer to your local assay conditions and test parameters for reference.

**PRODUCT OVERVIEW**

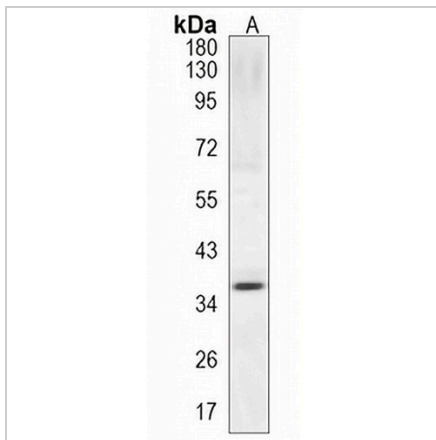
|                   |  |
|-------------------|--|
| Description       | Recombinant rabbit monoclonal antibody to MYF5   |
| Specificity       | Recognizes endogenous levels of MYF5 protein   |
| Antibody Type     | Primary antibody, Recombinant  |
| Immunogen         | KLH-conjugated synthetic peptide encompassing a sequence within human MYF5. The exact sequence is proprietary. |
| Purification      | The antibody was purified by immunogen affinity chromatography.  |
| Molecular Weight  | Predicted: 28 kD; Observed: 37 kD  |
| Form/Buffer       | Liquid in PBS, pH 7.4, containing 50% glycerol, 0.2% BSA and 0.01% sodium azide.                               |
| Alternative Names | BHLHC2; Myogenic factor 5; Myf-5; Class C basic helix-loop-helix protein 2; bHLHc2                             |
| Gene Symbol       | MYF5   |
| Entrez Gene       | 4617(Human); 17877(Mouse)  |
| SwissProt         | P13349(Human); P24699(Mouse)   |

\*AREX continuously optimizes our products. Webpage content may not reflect the latest updates. For inquiries, please contact [info@arexbio.com](mailto:info@arexbio.com) or your local distributor.

\*Clone Number, Reactivity, Source/Host and Clonality can be found in the product name and Key Features section above.

**DATASHEET****MYF5 Rabbit Monoclonal Antibody(C1205)**

CAT. NO. AMA00817

**DATA**

Western blot analysis of MYF5 expression in mouse liver (A) whole cell lysates. (Predicted band size: 28 kD; Observed band size: 37 kD)

**STORAGE**

Store at 4°C short term. For long term storage, store at -20°C, avoiding freeze/thaw cycles.

**NOTE**

For Research Use Only. Not for diagnostic, therapeutics, prophylactic or in vivo use.