

**DATASHEET**

**Myosin 11 Rabbit Monoclonal Antibody(C1216)**

CAT. NO. AMA00828

**KEY FEATURES**

Target	Myosin 11	Source / Host	Rabbit
Reactivity	Human, Mouse, Rat	Clonality	Monoclonal
Applications	WB, IHC	Conjugation	Unconjugated
Form / Buffer	Liquid in PBS, pH 7.4, containing 50% glycerol, 0.2% BSA and 0.01% sodium azide.	Storage	at-20°C

**BACKGROUND**

Muscle contraction.

**APPLICATION**

To ensure optimal assay performance, AREX recommends conducting reagent titration tailored to each testing system for optimal detection results.

WB	1:500 - 1:1000
IHC	1:50 - 1:200

\*Results are sample-specific. Please refer to your local assay conditions and test parameters for reference.

**PRODUCT OVERVIEW**

Description	Recombinant rabbit monoclonal antibody to Myosin 11
Specificity	Recognizes endogenous levels of Myosin 11 protein
Antibody Type	Primary antibody, Recombinant
Immunogen	KLH-conjugated synthetic peptide encompassing a sequence within human Myosin 11. The exact sequence is proprietary.
Purification	The antibody was purified by immunogen affinity chromatography.
Molecular Weight	Predicted: 227 kD; Observed: 250 kD
Form/Buffer	Liquid in PBS, pH 7.4, containing 50% glycerol, 0.2% BSA and 0.01% sodium azide.
Alternative Names	KIAA0866; Myosin-11; Myosin heavy chain 11; Myosin heavy chain, smooth muscle isoform; SMMHC
Gene Symbol	MYH11
Entrez Gene	4629(Human)
SwissProt	P35749(Human); O08638(Mouse); Q63862(Rat)

\*AREX continuously optimizes our products. Webpage content may not reflect the latest updates. For inquiries, please contact [info@arexbio.com](mailto:info@arexbio.com) or your local distributor.

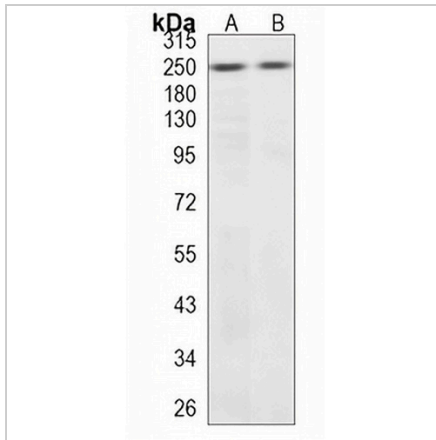
\*Clone Number, Reactivity, Source/Host and Clonality can be found in the product name and Key Features section above.

**DATASHEET**

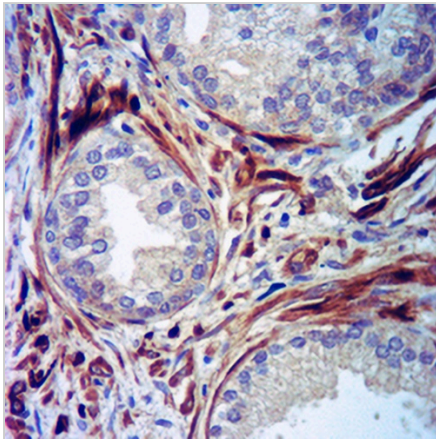
**Myosin 11 Rabbit Monoclonal Antibody(C1216)**

CAT. NO. AMA00828

**DATA**



Western blot analysis of Myosin 11 expression in mouse muscle (A), rat muscle (B) whole cell lysates. (Predicted band size: 227 kD; Observed band size: 250 kD)



Immunohistochemical analysis of Myosin 11 staining in human prostate formalin fixed paraffin embedded tissue section. The section was pre-treated using heat mediated antigen retrieval with sodium citrate buffer (pH 6.0). The section was then incubated with the antibody at room temperature and detected using an HRP conjugated compact polymer system. DAB was used as the chromogen. The section was then counterstained with haematoxylin and mounted with DPX.

**STORAGE**

Store at 4°C short term. For long term storage, store at -20°C, avoiding freeze/thaw cycles.

**NOTE**

For Research Use Only. Not for diagnostic, therapeutics, prophylactic or in vivo use.