

DATASHEET

Collagen 11 alpha 1 Rabbit Monoclonal Antibody(C1217)

CAT. NO. AMA00829

KEY FEATURES

Target	Collagen 11 alpha 1	Source / Host	Rabbit
Reactivity	Human, Mouse, Rat	Clonality	Monoclonal
Applications	WB	Conjugation	Unconjugated
Form / Buffer	Liquid in PBS, pH 7.4, containing 50% glycerol, 0.2% BSA and 0.01% sodium azide.	Storage	at-20°C

BACKGROUND

May play an important role in fibrillogenesis by controlling lateral growth of collagen II fibrils.

APPLICATION

To ensure optimal assay performance, AREX recommends conducting reagent titration tailored to each testing system for optimal detection results.

WB	1:500 - 1:1000
----	----------------

*Results are sample-specific. Please refer to your local assay conditions and test parameters for reference.

PRODUCT OVERVIEW

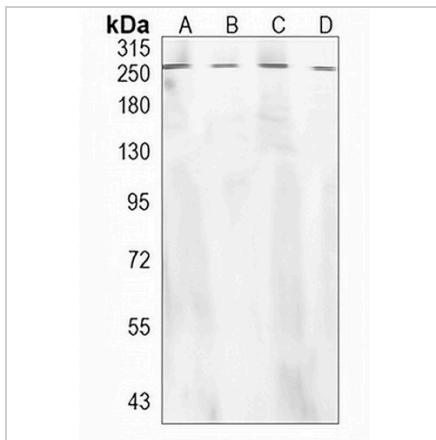
Description	Recombinant rabbit monoclonal antibody to Collagen 11 alpha 1
Specificity	Recognizes endogenous levels of Collagen 11 alpha 1 protein
Antibody Type	Primary antibody, Recombinant
Immunogen	KLH-conjugated synthetic peptide encompassing a sequence within human Collagen 11 alpha 1. The exact sequence is proprietary.
Purification	The antibody was purified by immunogen affinity chromatography.
Molecular Weight	Predicted: 181 kD; Observed: 150; 252 kD
Form/Buffer	Liquid in PBS, pH 7.4, containing 50% glycerol, 0.2% BSA and 0.01% sodium azide.
Alternative Names	COLL6; Collagen alpha-1(XI) chain
Gene Symbol	COL11A1
Entrez Gene	1301(Human); 12814(Mouse); 25654(Rat)
SwissProt	P12107(Human); Q61245(Mouse); P20909(Rat)

*AREX continuously optimizes our products. Webpage content may not reflect the latest updates. For inquiries, please contact info@arexbio.com or your local distributor.

*Clone Number, Reactivity, Source/Host and Clonality can be found in the product name and Key Features section above.

DATASHEET**Collagen 11 alpha 1 Rabbit Monoclonal Antibody(C1217)**

CAT. NO. AMA00829

DATA

Western blot analysis of Collagen 11 alpha 1 expression in mouse brain (A), mouse liver (B), rat brain (C), rat liver (D) whole cell lysates. (Predicted band size: 181 kD; Observed band size: 150; 252 kD)

STORAGE

Store at 4°C short term. For long term storage, store at -20°C, avoiding freeze/thaw cycles.

NOTE

For Research Use Only. Not for diagnostic, therapeutics, prophylactic or in vivo use.