

DATASHEET

Hemoglobin gamma Rabbit Monoclonal Antibody(C1229)

CAT. NO. AMA00841

KEY FEATURES

Target	Hemoglobin gamma	Source / Host	Rabbit
Reactivity	Human, Rat	Clonality	Monoclonal
Applications	WB	Conjugation	Unconjugated
Form / Buffer	Liquid in PBS, pH 7.4, containing 50% glycerol, 0.2% BSA and 0.01% sodium azide.	Storage	at-20°C

BACKGROUND

Gamma chains make up the fetal hemoglobin F, in combination with alpha chains.

APPLICATION

To ensure optimal assay performance, AREX recommends conducting reagent titration tailored to each testing system for optimal detection results.

WB	1:500 - 1:1000
----	----------------

*Results are sample-specific. Please refer to your local assay conditions and test parameters for reference.

PRODUCT OVERVIEW

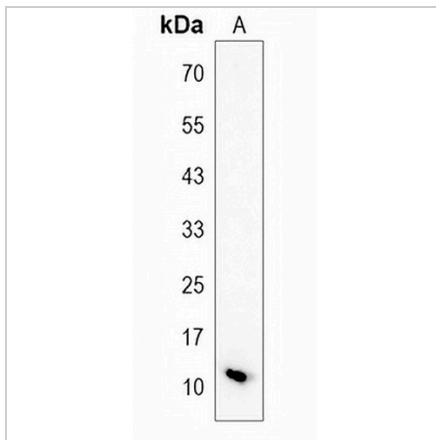
Description	Recombinant rabbit monoclonal antibody to Hemoglobin gamma
Specificity	Recognizes endogenous levels of Hemoglobin gamma protein
Antibody Type	Primary antibody, Recombinant
Immunogen	KLH-conjugated synthetic peptide encompassing a sequence within human Hemoglobin gamma. The exact sequence is proprietary.
Purification	The antibody was purified by immunogen affinity chromatography.
Molecular Weight	Predicted: 16 kD; Observed: 12 kD
Form/Buffer	Liquid in PBS, pH 7.4, containing 50% glycerol, 0.2% BSA and 0.01% sodium azide.
Alternative Names	Hemoglobin subunit gamma-1; Gamma-1-globin; Hb F Agamma; Hemoglobin gamma-1 chain; Hemoglobin gamma-A chain; Hemoglobin subunit gamma-2; Gamma-2-globin; Hb F Ggamma; Hemoglobin gamma-2 chain; Hemoglobin gamma-G chain
Gene Symbol	HBG1; HBG2
Entrez Gene	3047; 3048(Human)
SwissProt	P69891; P69892(Human)

*AREX continuously optimizes our products. Webpage content may not reflect the latest updates. For inquiries, please contact info@arexbio.com or your local distributor.

*Clone Number, Reactivity, Source/Host and Clonality can be found in the product name and Key Features section above.

DATASHEET**Hemoglobin gamma Rabbit Monoclonal Antibody(C1229)**

CAT. NO. AMA00841

DATA

Western blot analysis of Hemoglobin gamma expression in rat brain (A) whole cell lysates. (Predicted band size: 16 kD; Observed band size: 12 kD)

STORAGE

Store at 4°C short term. For long term storage, store at -20°C, avoiding freeze/thaw cycles.

NOTE

For Research Use Only. Not for diagnostic, therapeutics, prophylactic or in vivo use.