

**DATASHEET**

**Complement C1S Rabbit Monoclonal Antibody(C1244)**

CAT. NO. AMA00856

**KEY FEATURES**

Target	Complement C1S	Source / Host	Rabbit
Reactivity	Human	Clonality	Monoclonal
Applications	WB	Conjugation	Unconjugated
Form / Buffer	Liquid in PBS, pH 7.4, containing 50% glycerol, 0.2% BSA and 0.01% sodium azide.	Storage	at-20°C

**BACKGROUND**

Component of the complement C1 complex, a multiprotein complex that initiates the classical pathway of the complement system, a cascade of proteins that leads to phagocytosis and breakdown of pathogens and signaling that strengthens the adaptive immune system . C1S is activated following association of the C1 complex with immunoglobulins (IgG or IgM) complexed with antigens to form antigen-antibody complexes on the surface of pathogens . C1S is cleaved and activated by C1R to generate C1s subcomponent heavy and light chains . C1s subcomponent light chain then cleaves and activates C2 and C4, the next components of the classical complement pathway .

**APPLICATION**

To ensure optimal assay performance, AREX recommends conducting reagent titration tailored to each testing system for optimal detection results.

WB	1:500 - 1:1000
----	----------------

\*Results are sample-specific. Please refer to your local assay conditions and test parameters for reference.

**PRODUCT OVERVIEW**

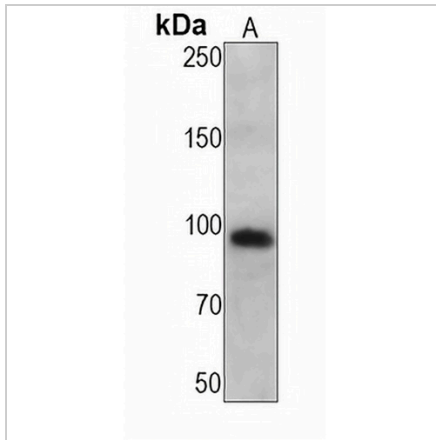
Description	Recombinant rabbit monoclonal antibody to Complement C1S
Specificity	Recognizes endogenous levels of Complement C1S protein
Antibody Type	Primary antibody, Recombinant
Immunogen	KLH-conjugated synthetic peptide encompassing a sequence within human Complement C1S protein. The exact sequence is proprietary.
Purification	The antibody was purified by immunogen affinity chromatography.
Molecular Weight	Predicted: 76 kD; Observed: 90 kD
Form/Buffer	Liquid in PBS, pH 7.4, containing 50% glycerol, 0.2% BSA and 0.01% sodium azide.
Alternative Names	Complement C1s subcomponent; C1 esterase; Complement component 1 subcomponent s
Gene Symbol	C1S
Entrez Gene	716(Human)
SwissProt	P09871(Human)

\*AREX continuously optimizes our products. Webpage content may not reflect the latest updates. For inquiries, please contact [info@arexbio.com](mailto:info@arexbio.com) or your local distributor.

\*Clone Number, Reactivity, Source/Host and Clonality can be found in the product name and Key Features section above.

**DATASHEET****Complement C1S Rabbit Monoclonal Antibody(C1244)**

CAT. NO. AMA00856

**DATA**

Western blot analysis of Complement C1S expression in LO2 (A) whole cell lysates.  
(Predicted band size: 76 kD; Observed band size: 90 kD)

**STORAGE**

Store at 4°C short term. For long term storage, store at -20°C, avoiding freeze/thaw cycles.

**NOTE**

For Research Use Only. Not for diagnostic, therapeutics, prophylactic or in vivo use.