

## DATASHEET

# CDC7 Rabbit Monoclonal Antibody(C1269)

CAT. NO. AMA00881

### KEY FEATURES

Target	CDC7	Source / Host	Rabbit
Reactivity	Human	Clonality	Monoclonal
Applications	WB, IHC	Conjugation	Unconjugated
Form / Buffer	Liquid in PBS, pH 7.4, containing 50% glycerol, 0.2% BSA and 0.01% sodium azide.	Storage	at-20°C

### BACKGROUND

Kinase involved in initiation of DNA replication. Phosphorylates critical substrates that regulate the G1/S phase transition and initiation of DNA replication, such as MCM proteins and CLASPIN.

### APPLICATION

To ensure optimal assay performance, AREX recommends conducting reagent titration tailored to each testing system for optimal detection results.

WB	1:500 - 1:1000
IHC	1:50 - 1:200

\*Results are sample-specific. Please refer to your local assay conditions and test parameters for reference.

### PRODUCT OVERVIEW

Description	Recombinant rabbit monoclonal antibody to CDC7
Specificity	Recognizes endogenous levels of CDC7 protein
Antibody Type	Primary antibody, Recombinant
Immunogen	KLH-conjugated synthetic peptide encompassing a sequence within human CDC7 protein. The exact sequence is proprietary.
Purification	The antibody was purified by immunogen affinity chromatography.
Molecular Weight	Predicted: 63 kD; Observed: 70 kD
Form/Buffer	Liquid in PBS, pH 7.4, containing 50% glycerol, 0.2% BSA and 0.01% sodium azide.
Alternative Names	CDC7L1; Cell division cycle 7-related protein kinase; CDC7-related kinase; HsCdc7; huCdc7
Gene Symbol	CDC7
Entrez Gene	8317(Human)
SwissProt	O00311(Human)

\*AREX continuously optimizes our products. Webpage content may not reflect the latest updates. For inquiries, please contact [info@arexbio.com](mailto:info@arexbio.com) or your local distributor.

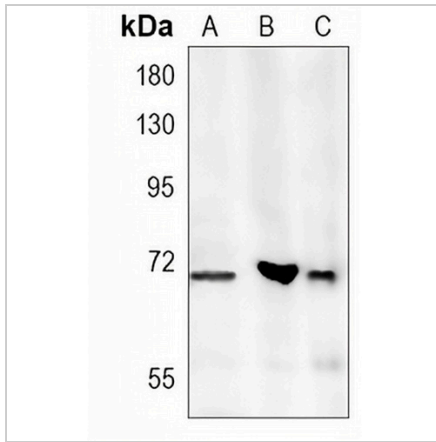
\*Clone Number, Reactivity, Source/Host and Clonality can be found in the product name and Key Features section above.

**DATASHEET**

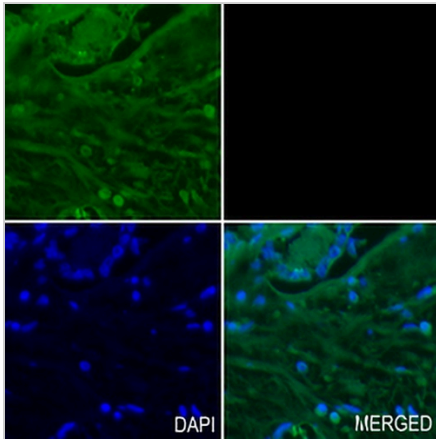
**CDC7 Rabbit Monoclonal Antibody(C1269)**

CAT. NO. AMA00881

**DATA**



Western blot analysis of CDC7 expression in K562 (A), Jurkat (B), HeLa (C) whole cell lysates. (Predicted band size: 63 kD; Observed band size: 70 kD)



Immunohistochemical analysis of CDC7 staining in human ovarian formalin fixed paraffin embedded tissue section. The section was pre-treated using heat mediated antigen retrieval with sodium citrate buffer (pH 6.0). The section was then incubated with the antibody at room temperature and detected using an HRP conjugated compact polymer system. Tyramide-AREX® Fluor 488 (green) was used as the chromogen. The section was then counterstained with DAPI (blue).

**STORAGE**

Store at 4°C short term. For long term storage, store at -20°C, avoiding freeze/thaw cycles.

**NOTE**

For Research Use Only. Not for diagnostic, therapeutics, prophylactic or in vivo use.