

DATASHEET

PARP1 Rabbit Monoclonal Antibody(C1272)

CAT. NO. AMA00884

KEY FEATURES

| | | | |
|---------------|--|---------------|--------------|
| Target | PARP1 | Source / Host | Rabbit |
| Reactivity | Human | Clonality | Monoclonal |
| Applications | WB | Conjugation | Unconjugated |
| Form / Buffer | Liquid in PBS, pH 7.4, containing 50% glycerol, 0.2% BSA and 0.01% sodium azide. | Storage | at-20°C |

BACKGROUND

Poly-ADP-ribosyltransferase that mediates poly-ADP-ribosylation of proteins and plays a key role in DNA repair . Mediates glutamate, aspartate, serine, histidine or tyrosine ADP-ribosylation of proteins: the ADP-D-ribosyl group of NAD(+) is transferred to the acceptor carboxyl group of target residues and further ADP-ribosyl groups are transferred to the 2'-position of the terminal adenosine moiety, building up a polymer with an average chain length of 20-30 units . Serine ADP-ribosylation of proteins constitutes the primary form of ADP-ribosylation of proteins in response to DNA damage . Specificity for the different amino acids is conferred by interacting factors, such as HPF1 and NMNAT1 .

APPLICATION

To ensure optimal assay performance, AREX recommends conducting reagent titration tailored to each testing system for optimal detection results.

| | |
|----|----------------|
| WB | 1:500 - 1:1000 |
|----|----------------|

*Results are sample-specific. Please refer to your local assay conditions and test parameters for reference.

PRODUCT OVERVIEW

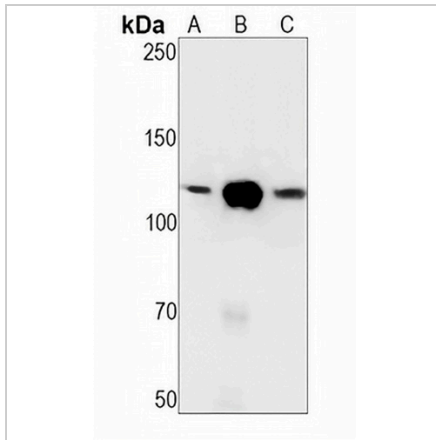
| | |
|-------------------|---|
| Description | Recombinant rabbit monoclonal antibody to PARP1 |
| Specificity | Recognizes endogenous levels of PARP1 protein |
| Antibody Type | Primary antibody, Recombinant |
| Immunogen | KLH-conjugated synthetic peptide encompassing a sequence within human PARP1 protein. The exact sequence is proprietary. |
| Purification | The antibody was purified by immunogen affinity chromatography. |
| Molecular Weight | Predicted: 113 kD; Observed: 113 kD |
| Form/Buffer | Liquid in PBS, pH 7.4, containing 50% glycerol, 0.2% BSA and 0.01% sodium azide. |
| Alternative Names | ADPRT; PPOL; Poly [ADP-ribose] polymerase 1; PARP-1; ADP-ribosyltransferase diphtheria toxin-like 1; ARTD1; NAD(+) ADP-ribosyltransferase 1; ADPRT 1; Poly[ADP-ribose] synthase 1 |
| Gene Symbol | PARP1 |
| Entrez Gene | 142(Human) |
| SwissProt | P09874(Human) |

*AREX continuously optimizes our products. Webpage content may not reflect the latest updates. For inquiries, please contact info@arexbio.com or your local distributor.

*Clone Number, Reactivity, Source/Host and Clonality can be found in the product name and Key Features section above.

DATASHEET**PARP1 Rabbit Monoclonal Antibody(C1272)**

CAT. NO. AMA00884

DATA

Western blot analysis of PARP1 expression in HeLa (A), K562 (B), PC3 (C) whole cell lysates.
(Predicted band size: 113 kD; Observed band size: 113 kD)

STORAGE

Store at 4°C short term. For long term storage, store at -20°C, avoiding freeze/thaw cycles.

NOTE

For Research Use Only. Not for diagnostic, therapeutics, prophylactic or in vivo use.