

DATASHEET

ELK1 Rabbit Monoclonal Antibody(C1274)

CAT. NO. AMA00886

KEY FEATURES

Target	ELK1	Source / Host	Rabbit
Reactivity	Human	Clonality	Monoclonal
Applications	WB	Conjugation	Unconjugated
Form / Buffer	Liquid in PBS, pH 7.4, containing 50% glycerol, 0.2% BSA and 0.01% sodium azide.	Storage	at-20°C

BACKGROUND

Transcription factor that binds to purine-rich DNA sequences . Forms a ternary complex with SRF and the ETS and SRF motifs of the serum response element (SRE) on the promoter region of immediate early genes such as FOS and IER2 . Induces target gene transcription upon JNK and MAPK-signaling pathways stimulation .

APPLICATION

To ensure optimal assay performance, AREX recommends conducting reagent titration tailored to each testing system for optimal detection results.

WB	1:500 - 1:1000
----	----------------

*Results are sample-specific. Please refer to your local assay conditions and test parameters for reference.

PRODUCT OVERVIEW

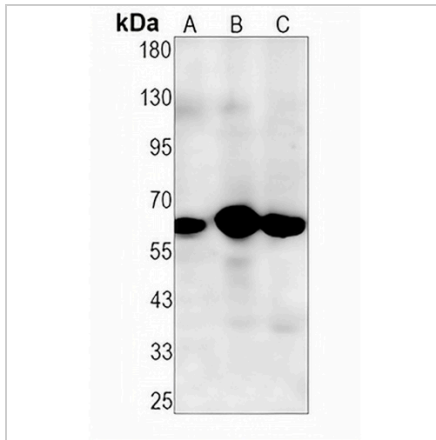
Description	Recombinant rabbit monoclonal antibody to ELK1
Specificity	Recognizes endogenous levels of ELK1 protein
Antibody Type	Primary antibody, Recombinant
Immunogen	KLH-conjugated synthetic peptide encompassing a sequence within human ELK1 protein. The exact sequence is proprietary.
Purification	The antibody was purified by immunogen affinity chromatography.
Molecular Weight	Predicted: 44 kD; Observed: 62 kD
Form/Buffer	Liquid in PBS, pH 7.4, containing 50% glycerol, 0.2% BSA and 0.01% sodium azide.
Alternative Names	ETS domain-containing protein Elk-1
Gene Symbol	ELK1
Entrez Gene	2002(Human)
SwissProt	P19419(Human)

*AREX continuously optimizes our products. Webpage content may not reflect the latest updates. For inquiries, please contact info@arexbio.com or your local distributor.

*Clone Number, Reactivity, Source/Host and Clonality can be found in the product name and Key Features section above.

DATASHEET**ELK1 Rabbit Monoclonal Antibody(C1274)**

CAT. NO. AMA00886

DATA

Western blot analysis of ELK1 expression in SHSY5Y (A), K562 (B), A431 (C) whole cell lysates. (Predicted band size: 44 kD; Observed band size: 62 kD)

STORAGE

Store at 4°C short term. For long term storage, store at -20°C, avoiding freeze/thaw cycles.

NOTE

For Research Use Only. Not for diagnostic, therapeutics, prophylactic or in vivo use.