

## DATASHEET

# CD49f Rabbit Monoclonal Antibody(C1277)

CAT. NO. AMA00889

### KEY FEATURES

Target	CD49f	Source / Host	Rabbit
Reactivity	Human, Mouse, Rat	Clonality	Monoclonal
Applications	WB	Conjugation	Unconjugated
Form / Buffer	Liquid in PBS, pH 7.4, containing 50% glycerol, 0.2% BSA and 0.01% sodium azide.	Storage	at-20°C

### BACKGROUND

Integrin alpha-6/beta-1 (ITGA6:ITGB1) is a receptor for laminin on platelets . Integrin alpha-6/beta-1 (ITGA6:ITGB1) is present in oocytes and is involved in sperm-egg fusion . Integrin alpha-6/beta-4 (ITGA6:ITGB4) is a receptor for laminin in epithelial cells and it plays a critical structural role in the hemidesmosome . ITGA6:ITGB4 binds to NRG1 (via EGF domain) and this binding is essential for NRG1-ERBB signaling is a receptor for laminin on platelets . Integrin alpha-6/beta-1 (ITGA6:ITGB1) is present in oocytes and is involved in sperm-egg fusion . Integrin alpha-6/beta-4 (ITGA6:ITGB4) is a receptor for laminin in epithelial cells and it plays a critical structural role in the hemidesmosome .

### APPLICATION

To ensure optimal assay performance, AREX recommends conducting reagent titration tailored to each testing system for optimal detection results.

WB	1:500 - 1:1000
----	----------------

\*Results are sample-specific. Please refer to your local assay conditions and test parameters for reference.

### PRODUCT OVERVIEW

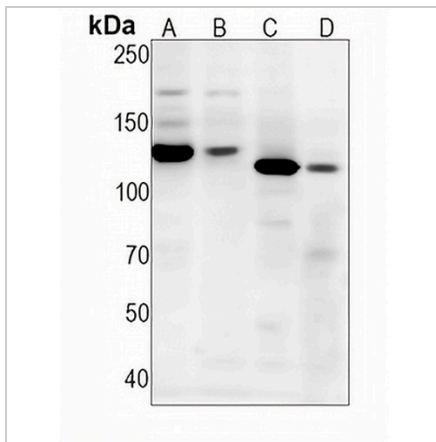
Description	Recombinant rabbit monoclonal antibody to CD49f
Specificity	Recognizes endogenous levels of CD49f protein
Antibody Type	Primary antibody, Recombinant
Immunogen	KLH-conjugated synthetic peptide encompassing a sequence within human CD49f protein. The exact sequence is proprietary.
Purification	The antibody was purified by immunogen affinity chromatography.
Molecular Weight	Predicted: 126 kD; Observed: 127 kD
Form/Buffer	Liquid in PBS, pH 7.4, containing 50% glycerol, 0.2% BSA and 0.01% sodium azide.
Alternative Names	Integrin alpha-6; CD49 antigen-like family member F; VLA-6; CD49f
Gene Symbol	ITGA6
Entrez Gene	3655(Human); 16403(Mouse)
SwissProt	P23229(Human); Q61739(Mouse)

\*AREX continuously optimizes our products. Webpage content may not reflect the latest updates. For inquiries, please contact [info@arexbio.com](mailto:info@arexbio.com) or your local distributor.

\*Clone Number, Reactivity, Source/Host and Clonality can be found in the product name and Key Features section above.

**DATASHEET****CD49f Rabbit Monoclonal Antibody(C1277)**

CAT. NO. AMA00889

**DATA**

Western blot analysis of CD49f expression in A431 (A), HeLa (B), mouse kidney (C), rat kidney (D) whole cell lysates. (Predicted band size: 126 kD; Observed band size: 127 kD)

**STORAGE**

Store at 4°C short term. For long term storage, store at -20°C, avoiding freeze/thaw cycles.

**NOTE**

For Research Use Only. Not for diagnostic, therapeutics, prophylactic or in vivo use.