

**DATASHEET**

**SHPTP2 Rabbit Monoclonal Antibody(C1287)**

CAT. NO. AMA00899

**KEY FEATURES**

Target	SHPTP2	Source / Host	Rabbit
Reactivity	Human, Mouse	Clonality	Monoclonal
Applications	WB	Conjugation	Unconjugated
Form / Buffer	Liquid in PBS, pH 7.4, containing 50% glycerol, 0.2% BSA and 0.01% sodium azide.	Storage	at-20°C

**BACKGROUND**

Acts downstream of various receptor and cytoplasmic protein tyrosine kinases to participate in the signal transduction from the cell surface to the nucleus . Positively regulates MAPK signal transduction pathway . Dephosphorylates GAB1, ARHGAP35 and EGFR . Dephosphorylates ROCK2 at 'Tyr-722' resulting in stimulation of its RhoA binding activity . Dephosphorylates CDC73 . Dephosphorylates SOX9 on tyrosine residues, leading to inactivate SOX9 and promote ossification . Dephosphorylates tyrosine-phosphorylated NEDD9/CAS-L . Acts as an effector of PDCD1-mediated inhibition of T-cell response: recruited by phosphorylated PDCD1, mediating dephosphorylation of key T-cell receptor (TCR) proximal signaling molecules, leading to TCR signaling inhibition .

**APPLICATION**

To ensure optimal assay performance, AREX recommends conducting reagent titration tailored to each testing system for optimal detection results.

WB	1:500 - 1:1000
----	----------------

\*Results are sample-specific. Please refer to your local assay conditions and test parameters for reference.

**PRODUCT OVERVIEW**

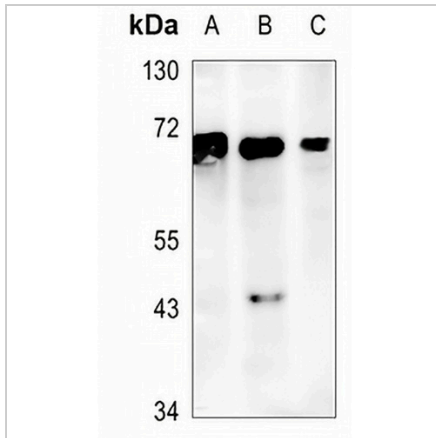
Description	Recombinant rabbit monoclonal antibody to SHPTP2
Specificity	Recognizes endogenous levels of SHPTP2 protein
Antibody Type	Primary antibody, Recombinant
Immunogen	KLH-conjugated synthetic peptide encompassing a sequence within human SHPTP2 protein. The exact sequence is proprietary.
Purification	The antibody was purified by immunogen affinity chromatography.
Molecular Weight	Predicted: 68 kD; Observed: 68 kD
Form/Buffer	Liquid in PBS, pH 7.4, containing 50% glycerol, 0.2% BSA and 0.01% sodium azide.
Alternative Names	PTP2C; SHPTP2; Tyrosine-protein phosphatase non-receptor type 11; Protein-tyrosine phosphatase 1D; PTP-1D; Protein-tyrosine phosphatase 2C; PTP-2C; SH-PTP2; SHP-2; Shp2; SH-PTP3
Gene Symbol	PTPN11
Entrez Gene	5781(Human); 19247(Mouse)
SwissProt	Q06124(Human); P35235(Mouse)

\*AREX continuously optimizes our products. Webpage content may not reflect the latest updates. For inquiries, please contact [info@arexbio.com](mailto:info@arexbio.com) or your local distributor.

\*Clone Number, Reactivity, Source/Host and Clonality can be found in the product name and Key Features section above.

**DATASHEET****SHPTP2 Rabbit Monoclonal Antibody(C1287)**

CAT. NO. AMA00899

**DATA**

Western blot analysis of SHPTP2 expression in HeLa (A), MCF7 (B), mouse lung (C) whole cell lysates. (Predicted band size: 68 kD; Observed band size: 68 kD)

**STORAGE**

Store at 4°C short term. For long term storage, store at -20°C, avoiding freeze/thaw cycles.

**NOTE**

For Research Use Only. Not for diagnostic, therapeutics, prophylactic or in vivo use.