

DATASHEET

STAT1 Rabbit Monoclonal Antibody(C1293)

CAT. NO. AMA00905

KEY FEATURES

| | | | |
|---------------|--|---------------|--------------|
| Target | STAT1 | Source / Host | Rabbit |
| Reactivity | Human, Mouse, Rat | Clonality | Monoclonal |
| Applications | WB | Conjugation | Unconjugated |
| Form / Buffer | Liquid in PBS, pH 7.4, containing 50% glycerol, 0.2% BSA and 0.01% sodium azide. | Storage | at-20°C |

BACKGROUND

Signal transducer and transcription activator that mediates cellular responses to interferons (IFNs), cytokine KITLG/SCF and other cytokines and other growth factors, cytokine KITLG/SCF and other cytokines and other growth factors. Following type I IFN (IFN-alpha and IFN-beta) binding to cell surface receptors, signaling via protein kinases leads to activation of Jak kinases (TYK2 and JAK1) and to tyrosine phosphorylation of STAT1 and STAT2. The phosphorylated STATs dimerize and associate with ISGF3G/IRF-9 to form a complex termed ISGF3 transcription factor, that enters the nucleus. ISGF3 binds to the IFN stimulated response element (ISRE) to activate the transcription of IFN-stimulated genes (ISG), which drive the cell in an antiviral state.

APPLICATION

To ensure optimal assay performance, AREX recommends conducting reagent titration tailored to each testing system for optimal detection results.

| | |
|----|----------------|
| WB | 1:500 - 1:1000 |
|----|----------------|

*Results are sample-specific. Please refer to your local assay conditions and test parameters for reference.

PRODUCT OVERVIEW

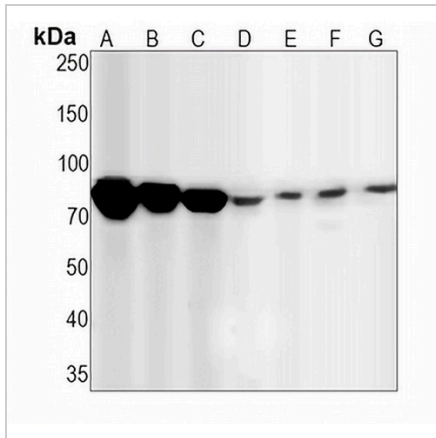
| | |
|-------------------|---|
| Description | Recombinant rabbit monoclonal antibody to STAT1 |
| Specificity | Recognizes endogenous levels of STAT1 protein |
| Antibody Type | Primary antibody, Recombinant |
| Immunogen | KLH-conjugated synthetic peptide encompassing a sequence within human STAT1 protein. The exact sequence is proprietary. |
| Purification | The antibody was purified by immunogen affinity chromatography. |
| Molecular Weight | Predicted: 87 kD; Observed: 87 kD |
| Form/Buffer | Liquid in PBS, pH 7.4, containing 50% glycerol, 0.2% BSA and 0.01% sodium azide. |
| Alternative Names | Signal transducer and activator of transcription 1-alpha/beta; Transcription factor ISGF-3 components p91/p84 |
| Gene Symbol | STAT1 |
| Entrez Gene | 6772(Human) |
| SwissProt | P42224(Human); P42225(Mouse) |

*AREX continuously optimizes our products. Webpage content may not reflect the latest updates. For inquiries, please contact info@arexbio.com or your local distributor.

*Clone Number, Reactivity, Source/Host and Clonality can be found in the product name and Key Features section above.

DATASHEET**STAT1 Rabbit Monoclonal Antibody(C1293)**

CAT. NO. AMA00905

DATA

Western blot analysis of STAT1 expression in K562 (A), SHSY5Y (B), A431 (C), mouse liver (D), mouse kidney (E), rat liver (F), rat kidney (G) whole cell lysates. (Predicted band size: 87 kD; Observed band size: 87 kD)

STORAGE

Store at 4°C short term. For long term storage, store at -20°C, avoiding freeze/thaw cycles.

NOTE

For Research Use Only. Not for diagnostic, therapeutics, prophylactic or in vivo use.