

DATASHEET

CDC25C Rabbit Monoclonal Antibody(C1298)

CAT. NO. AMA00910

KEY FEATURES

Target	CDC25C	Source / Host	Rabbit
Reactivity	Human	Clonality	Monoclonal
Applications	WB	Conjugation	Unconjugated
Form / Buffer	Liquid in PBS, pH 7.4, containing 50% glycerol, 0.2% BSA and 0.01% sodium azide.	Storage	at-20°C

BACKGROUND

Functions as a dosage-dependent inducer in mitotic control. Tyrosine protein phosphatase required for progression of the cell cycle . When phosphorylated, highly effective in activating G2 cells into prophase . Directly dephosphorylates CDK1 and activates its kinase activity .

APPLICATION

To ensure optimal assay performance, AREX recommends conducting reagent titration tailored to each testing system for optimal detection results.

WB	1:500 - 1:1000
----	----------------

*Results are sample-specific. Please refer to your local assay conditions and test parameters for reference.

PRODUCT OVERVIEW

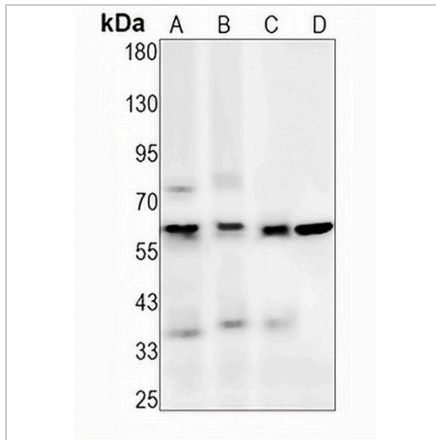
Description	Recombinant rabbit monoclonal antibody to CDC25C
Specificity	Recognizes endogenous levels of CDC25C protein
Antibody Type	Primary antibody, Recombinant
Immunogen	KLH-conjugated synthetic peptide encompassing a sequence within human CDC25C protein. The exact sequence is proprietary.
Purification	The antibody was purified by immunogen affinity chromatography.
Molecular Weight	Predicted: 53,50,48,45 kD; Observed: 60 kD
Form/Buffer	Liquid in PBS, pH 7.4, containing 50% glycerol, 0.2% BSA and 0.01% sodium azide.
Alternative Names	M-phase inducer phosphatase 3; Dual specificity phosphatase Cdc25C
Gene Symbol	CDC25C
Entrez Gene	995(Human)
SwissProt	P30307(Human)

*AREX continuously optimizes our products. Webpage content may not reflect the latest updates. For inquiries, please contact info@arexbio.com or your local distributor.

*Clone Number, Reactivity, Source/Host and Clonality can be found in the product name and Key Features section above.

DATASHEET**CDC25C Rabbit Monoclonal Antibody(C1298)**

CAT. NO. AMA00910

DATA

Western blot analysis of CDC25C expression in K562 (A), MCF7 (B), HepG2 (C), rat kidney (D) whole cell lysates. (Predicted band size: 53,50,48,45 kD; Observed band size: 60 kD)

STORAGE

Store at 4°C short term. For long term storage, store at -20°C, avoiding freeze/thaw cycles.

NOTE

For Research Use Only. Not for diagnostic, therapeutics, prophylactic or in vivo use.