

DATASHEET

CDC25B Rabbit Monoclonal Antibody(C1299)

CAT. NO. AMA00911

KEY FEATURES

Target	CDC25B	Source / Host	Rabbit
Reactivity	Human, Mouse	Clonality	Monoclonal
Applications	WB	Conjugation	Unconjugated
Form / Buffer	Liquid in PBS, pH 7.4, containing 50% glycerol, 0.2% BSA and 0.01% sodium azide.	Storage	at-20°C

BACKGROUND

Tyrosine protein phosphatase which functions as a dosage-dependent inducer of mitotic progression . Directly dephosphorylates CDK1 and stimulates its kinase activity . Required for G2/M phases of the cell cycle progression and abscission during cytokinesis in a ECT2-dependent manner . The three isoforms seem to have a different level of activity .

APPLICATION

To ensure optimal assay performance, AREX recommends conducting reagent titration tailored to each testing system for optimal detection results.

WB	1:500 - 1:1000
----	----------------

*Results are sample-specific. Please refer to your local assay conditions and test parameters for reference.

PRODUCT OVERVIEW

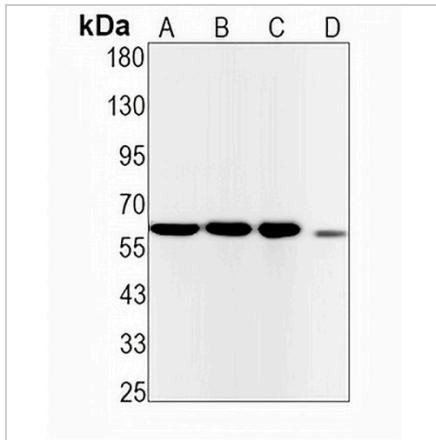
Description	Recombinant rabbit monoclonal antibody to CDC25B
Specificity	Recognizes endogenous levels of CDC25B protein
Antibody Type	Primary antibody, Recombinant
Immunogen	KLH-conjugated synthetic peptide encompassing a sequence within human CDC25B protein. The exact sequence is proprietary.
Purification	The antibody was purified by immunogen affinity chromatography.
Molecular Weight	Predicted: 64 kD; Observed: 62 kD
Form/Buffer	Liquid in PBS, pH 7.4, containing 50% glycerol, 0.2% BSA and 0.01% sodium azide.
Alternative Names	CDC25HU2; M-phase inducer phosphatase 2; Dual specificity phosphatase Cdc25B
Gene Symbol	CDC25B
Entrez Gene	994(Human); 12531(Mouse)
SwissProt	P30305(Human); P30306(Mouse)

*AREX continuously optimizes our products. Webpage content may not reflect the latest updates. For inquiries, please contact info@arexbio.com or your local distributor.

*Clone Number, Reactivity, Source/Host and Clonality can be found in the product name and Key Features section above.

DATASHEET**CDC25B Rabbit Monoclonal Antibody(C1299)**

CAT. NO. AMA00911

DATA

Western blot analysis of CDC25B expression in HEK293T (A), MCF7 (B), A549 (C), mouse kidney (D) whole cell lysates. (Predicted band size: 64 kD; Observed band size: 62 kD)

STORAGE

Store at 4°C short term. For long term storage, store at -20°C, avoiding freeze/thaw cycles.

NOTE

For Research Use Only. Not for diagnostic, therapeutics, prophylactic or in vivo use.