

**DATASHEET**

**CDC5L Rabbit Monoclonal Antibody(C1300)**

CAT. NO. AMA00912

**KEY FEATURES**

|               |  |               |              |
|---------------|--|---------------|--------------|
| Target        | CDC5L  | Source / Host | Rabbit       |
| Reactivity    | Human  | Clonality     | Monoclonal   |
| Applications  | WB   | Conjugation   | Unconjugated |
| Form / Buffer | Liquid in PBS, pH 7.4, containing 50% glycerol, 0.2% BSA and 0.01% sodium azide. | Storage       | at-20°C      |

**BACKGROUND**

DNA-binding protein involved in cell cycle control. May act as a transcription activator. Plays a role in pre-mRNA splicing as core component of precatalytic, catalytic and postcatalytic spliceosomal complexes . Component of the PRP19-CDC5L complex that forms an integral part of the spliceosome and is required for activating pre-mRNA splicing. The PRP19-CDC5L complex may also play a role in the response to DNA damage (DDR) . As a component of the minor spliceosome, involved in the splicing of U12-type introns in pre-mRNAs (Probable).

**APPLICATION**

To ensure optimal assay performance, AREX recommends conducting reagent titration tailored to each testing system for optimal detection results.

|    |                |
|----|----------------|
| WB | 1:500 - 1:1000 |
|----|----------------|

\*Results are sample-specific. Please refer to your local assay conditions and test parameters for reference.

**PRODUCT OVERVIEW**

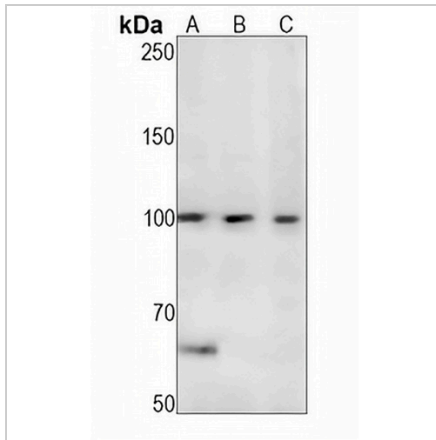
|                   |   |
|-------------------|---|
| Description       | Recombinant rabbit monoclonal antibody to CDC5L   |
| Specificity       | Recognizes endogenous levels of CDC5L protein   |
| Antibody Type     | Primary antibody, Recombinant   |
| Immunogen         | KLH-conjugated synthetic peptide encompassing a sequence within human CDC5L protein. The exact sequence is proprietary. |
| Purification      | The antibody was purified by immunogen affinity chromatography.   |
| Molecular Weight  | Predicted: 92 kD; Observed: 100 kD  |
| Form/Buffer       | Liquid in PBS, pH 7.4, containing 50% glycerol, 0.2% BSA and 0.01% sodium azide.  |
| Alternative Names | KIAA0432; PCDC5RP; Cell division cycle 5-like protein; Cdc5-like protein; Pombe cdc5-related protein                    |
| Gene Symbol       | CDC5L   |
| Entrez Gene       | 988(Human)  |
| SwissProt         | Q99459(Human)   |

\*AREX continuously optimizes our products. Webpage content may not reflect the latest updates. For inquiries, please contact [info@arexbio.com](mailto:info@arexbio.com) or your local distributor.

\*Clone Number, Reactivity, Source/Host and Clonality can be found in the product name and Key Features section above.

**DATASHEET****CDC5L Rabbit Monoclonal Antibody(C1300)**

CAT. NO. AMA00912

**DATA**

Western blot analysis of CDC5L expression in K562 (A), MCF7 (B), HeLa (C) whole cell lysates. (Predicted band size: 92 kD; Observed band size: 100 kD)

**STORAGE**

Store at 4°C short term. For long term storage, store at -20°C, avoiding freeze/thaw cycles.

**NOTE**

For Research Use Only. Not for diagnostic, therapeutics, prophylactic or in vivo use.