

DATASHEET

SOD1 Rabbit Monoclonal Antibody(C1309)

CAT. NO. AMA00921

KEY FEATURES

Target	SOD1	Source / Host	Rabbit
Reactivity	Human, Mouse, Rat	Clonality	Monoclonal
Applications	WB	Conjugation	Unconjugated
Form / Buffer	Liquid in PBS, pH 7.4, containing 50% glycerol, 0.2% BSA and 0.01% sodium azide.	Storage	at-20°C

BACKGROUND

Destroys radicals which are normally produced within the cells and which are toxic to biological systems . Catalyzes the oxidation of hydrogen sulfide (H₂S) to sulfate, playing an important role in detoxifying H₂S and limiting the accumulation of reactive sulfur species (RSS) such as persulfides and polysulfides .

APPLICATION

To ensure optimal assay performance, AREX recommends conducting reagent titration tailored to each testing system for optimal detection results.

WB	1:500 - 1:1000
----	----------------

*Results are sample-specific. Please refer to your local assay conditions and test parameters for reference.

PRODUCT OVERVIEW

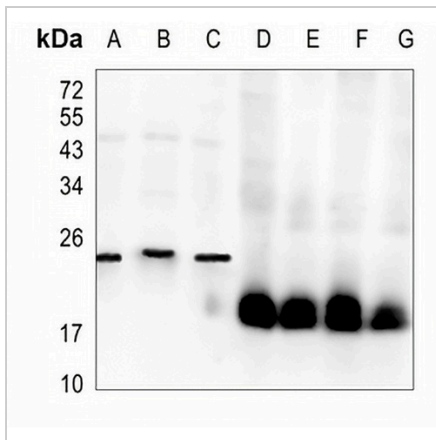
Description	Recombinant rabbit monoclonal antibody to SOD1
Specificity	Recognizes endogenous levels of SOD1 protein
Antibody Type	Primary antibody, Recombinant
Immunogen	KLH-conjugated synthetic peptide encompassing a sequence within human SOD1 protein. The exact sequence is proprietary.
Purification	The antibody was purified by immunogen affinity chromatography.
Molecular Weight	Predicted: 15 kD; Observed: 23, 18 kD
Form/Buffer	Liquid in PBS, pH 7.4, containing 50% glycerol, 0.2% BSA and 0.01% sodium azide.
Alternative Names	Superoxide dismutase [Cu-Zn]; Superoxide dismutase 1; hSod1
Gene Symbol	SOD1
Entrez Gene	6647(Human); 20655(Mouse); 24786(Rat)
SwissProt	P00441(Human); P08228(Mouse); P07632(Rat)

*AREX continuously optimizes our products. Webpage content may not reflect the latest updates. For inquiries, please contact info@arexbio.com or your local distributor.

*Clone Number, Reactivity, Source/Host and Clonality can be found in the product name and Key Features section above.

DATASHEET**SOD1 Rabbit Monoclonal Antibody(C1309)**

CAT. NO. AMA00921

DATA

Western blot analysis of SOD1 expression in MCF7 (A), K562 (B), HepG2 (C), mouse liver (D), mouse kidney (E), rat liver (F), rat kidney (G) whole cell lysates. (Predicted band size: 15 kDa; Observed band size: 23, 18 kDa)

STORAGE

Store at 4°C short term. For long term storage, store at -20°C, avoiding freeze/thaw cycles.

NOTE

For Research Use Only. Not for diagnostic, therapeutics, prophylactic or in vivo use.