

DATASHEET

CD18 Rabbit Monoclonal Antibody(C1313)

CAT. NO. AMA00925

KEY FEATURES

Target	CD18	Source / Host	Rabbit
Reactivity	Human	Clonality	Monoclonal
Applications	WB	Conjugation	Unconjugated
Form / Buffer	Liquid in PBS, pH 7.4, containing 50% glycerol, 0.2% BSA and 0.01% sodium azide.	Storage	at-20°C

BACKGROUND

Integrin ITGAL:ITGB2 is a receptor for ICAM1, ICAM2 and ICAM3 . Integrin ITGAL:ITGB2 is also a receptor for the secreted form of ubiquitin-like protein ISG15; the interaction is mediated by ITGAL . Integrins ITGAM:ITGB2 and ITGAX:ITGB2 are receptors for the iC3b fragment of the third complement component and for fibrinogen. Integrin ITGAX:ITGB2 recognizes the sequence G-P-R in fibrinogen alpha-chain. Integrin ITGAM:ITGB2 recognizes P1 and P2 peptides of fibrinogen gamma chain. Integrin ITGAM:ITGB2 is also a receptor for factor X. Integrin ITGAD:ITGB2 is a receptor for ICAM3 and VCAM1 . Contributes to natural killer cell cytotoxicity . Involved in leukocyte adhesion and transmigration of leukocytes including T-cells and neutrophils .

APPLICATION

To ensure optimal assay performance, AREX recommends conducting reagent titration tailored to each testing system for optimal detection results.

WB	1:500 - 1:1000
----	----------------

*Results are sample-specific. Please refer to your local assay conditions and test parameters for reference.

PRODUCT OVERVIEW

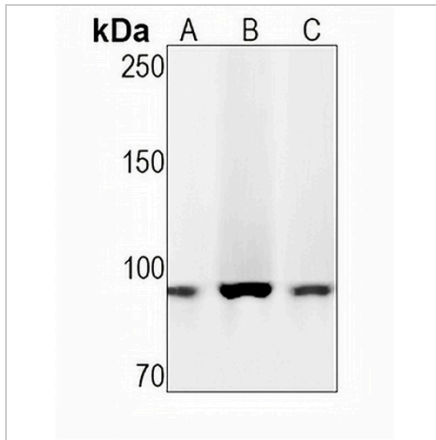
Description	Recombinant rabbit monoclonal antibody to CD18
Specificity	Recognizes endogenous levels of CD18 protein
Antibody Type	Primary antibody, Recombinant
Immunogen	KLH-conjugated synthetic peptide encompassing a sequence within human CD18 protein. The exact sequence is proprietary.
Purification	The antibody was purified by immunogen affinity chromatography.
Molecular Weight	Predicted: 84 kD; Observed: 95 kD
Form/Buffer	Liquid in PBS, pH 7.4, containing 50% glycerol, 0.2% BSA and 0.01% sodium azide.
Alternative Names	CD18; MFI7; Integrin beta-2; Cell surface adhesion glycoproteins LFA-1/CR3/p150,95 subunit beta; Complement receptor C3 subunit beta; CD18
Gene Symbol	ITGB2
Entrez Gene	3689(Human)
SwissProt	P05107(Human)

*AREX continuously optimizes our products. Webpage content may not reflect the latest updates. For inquiries, please contact info@arexbio.com or your local distributor.

*Clone Number, Reactivity, Source/Host and Clonality can be found in the product name and Key Features section above.

DATASHEET**CD18 Rabbit Monoclonal Antibody(C1313)**

CAT. NO. AMA00925

DATA

Western blot analysis of CD18 expression in A375 (A), K562 (B), THP1 (C) whole cell lysates. (Predicted band size: 84 kD; Observed band size: 95 kD)

STORAGE

Store at 4°C short term. For long term storage, store at -20°C, avoiding freeze/thaw cycles.

NOTE

For Research Use Only. Not for diagnostic, therapeutics, prophylactic or in vivo use.