

DATASHEET

CD55 Rabbit Monoclonal Antibody(C1320)

CAT. NO. AMA00932

KEY FEATURES

Target	CD55	Source / Host	Rabbit
Reactivity	Human, Mouse	Clonality	Monoclonal
Applications	WB, IHC	Conjugation	Unconjugated
Form / Buffer	Liquid in PBS, pH 7.4, containing 50% glycerol, 0.2% BSA and 0.01% sodium azide.	Storage	at-20°C

BACKGROUND

This protein recognizes C4b and C3b fragments that condense with cell-surface hydroxyl or amino groups when nascent C4b and C3b are locally generated during C4 and C3 activation. Interaction of daf with cell-associated C4b and C3b polypeptides interferes with their ability to catalyze the conversion of C2 and factor B to enzymatically active C2a and Bb and thereby prevents the formation of C4b2a and C3bBb, the amplification convertases of the complement cascade . Inhibits complement activation by destabilizing and preventing the formation of C3 and C5 convertases, which prevents complement damage .

APPLICATION

To ensure optimal assay performance, AREX recommends conducting reagent titration tailored to each testing system for optimal detection results.

WB	1:500 - 1:1000
IHC	1:50 - 1:200

*Results are sample-specific. Please refer to your local assay conditions and test parameters for reference.

PRODUCT OVERVIEW

Description	Recombinant rabbit monoclonal antibody to CD55
Specificity	Recognizes endogenous levels of CD55 protein
Antibody Type	Primary antibody, Recombinant
Immunogen	KLH-conjugated synthetic peptide encompassing a sequence within human CD55 protein. The exact sequence is proprietary.
Purification	The antibody was purified by immunogen affinity chromatography.
Molecular Weight	Predicted: 41 kD; Observed: 55-80 kD
Form/Buffer	Liquid in PBS, pH 7.4, containing 50% glycerol, 0.2% BSA and 0.01% sodium azide.
Alternative Names	CR; DAF; Complement decay-accelerating factor; CD55
Gene Symbol	CD55
Entrez Gene	1604(Human); 13136(Mouse)
SwissProt	P08174(Human); Q61475(Mouse)

*AREX continuously optimizes our products. Webpage content may not reflect the latest updates. For inquiries, please contact info@arexbio.com or your local distributor.

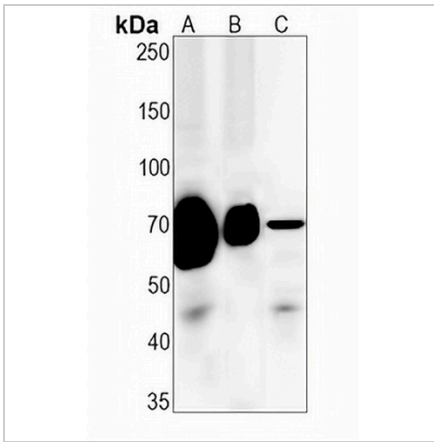
*Clone Number, Reactivity, Source/Host and Clonality can be found in the product name and Key Features section above.

DATASHEET

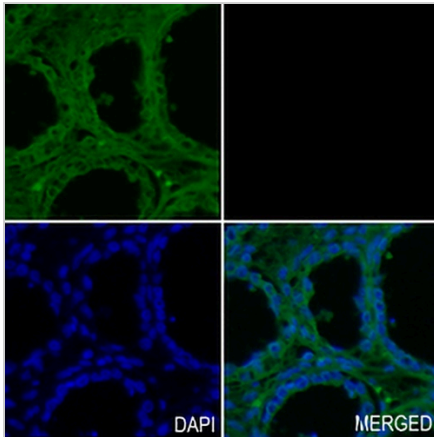
CD55 Rabbit Monoclonal Antibody(C1320)

CAT. NO. AMA00932

DATA



Western blot analysis of CD55 expression in A431 (A), K562 (B), mouse muscle (C) whole cell lysates. (Predicted band size: 41 kD; Observed band size: 55-80 kD)



Immunohistochemical analysis of CD55 staining in human ovarian formalin fixed paraffin embedded tissue section. The section was pre-treated using heat mediated antigen retrieval with sodium citrate buffer (pH 6.0). The section was then incubated with the antibody at room temperature and detected using an HRP conjugated compact polymer system. Tyramide-AREX® Fluor 488 (green) was used as the chromogen. The section was then counterstained with DAPI (blue).

STORAGE

Store at 4°C short term. For long term storage, store at -20°C, avoiding freeze/thaw cycles.

NOTE

For Research Use Only. Not for diagnostic, therapeutics, prophylactic or in vivo use.