

DATASHEET

SF2 Rabbit Monoclonal Antibody(C1332)

CAT. NO. AMA00944

KEY FEATURES

| | | | |
|---------------|--|---------------|--------------|
| Target | SF2 | Source / Host | Rabbit |
| Reactivity | Human, Mouse, Rat | Clonality | Monoclonal |
| Applications | WB, IF/ICC | Conjugation | Unconjugated |
| Form / Buffer | Liquid in PBS, pH 7.4, containing 50% glycerol, 0.2% BSA and 0.01% sodium azide. | Storage | at-20°C |

BACKGROUND

Plays a role in preventing exon skipping, ensuring the accuracy of splicing and regulating alternative splicing. Interacts with other spliceosomal components, via the RS domains, to form a bridge between the 5'- and 3'-splice site binding components, U1 snRNP and U2AF. Can stimulate binding of U1 snRNP to a 5'-splice site-containing pre-mRNA. Binds to purine-rich RNA sequences, either the octamer, 5'-RGAAGAAC-3' (r=A or G) or the decamers, AGGACAGAGC/AGGACGAAGC. Binds preferentially to the 5'-CGAGGCG-3' motif in vitro. Three copies of the octamer constitute a powerful splicing enhancer in vitro, the ASF/SF2 splicing enhancer (ASE) which can specifically activate ASE-dependent splicing. Isoform ASF-2 and isoform ASF-3 act as splicing repressors.

APPLICATION

To ensure optimal assay performance, AREX recommends conducting reagent titration tailored to each testing system for optimal detection results.

| | |
|--------|----------------|
| WB | 1:500 - 1:1000 |
| IF/ICC | 1:50 - 1:200 |

*Results are sample-specific. Please refer to your local assay conditions and test parameters for reference.

PRODUCT OVERVIEW

| | |
|-------------------|---|
| Description | Recombinant rabbit monoclonal antibody to SF2 |
| Specificity | Recognizes endogenous levels of SF2 protein |
| Antibody Type | Primary antibody, Recombinant |
| Immunogen | KLH-conjugated synthetic peptide encompassing a sequence within human SF2 protein. The exact sequence is proprietary. |
| Purification | The antibody was purified by immunogen affinity chromatography. |
| Molecular Weight | Predicted: 27 kD; Observed: 27 kD |
| Form/Buffer | Liquid in PBS, pH 7.4, containing 50% glycerol, 0.2% BSA and 0.01% sodium azide. |
| Alternative Names | ASF; SF2; SF2P33; SFRS1; Serine/arginine-rich splicing factor 1; Alternative-splicing factor 1; ASF-1; Splicing factor, arginine/serine-rich 1; pre-mRNA-splicing factor SF2, P33 subunit |
| Gene Symbol | SRSF1 |
| Entrez Gene | 6426(Human); 102641923; 110809(Mouse) |
| SwissProt | Q07955(Human); Q6PDM2(Mouse) |

*AREX continuously optimizes our products. Webpage content may not reflect the latest updates. For inquiries, please contact info@arexbio.com or your local distributor.

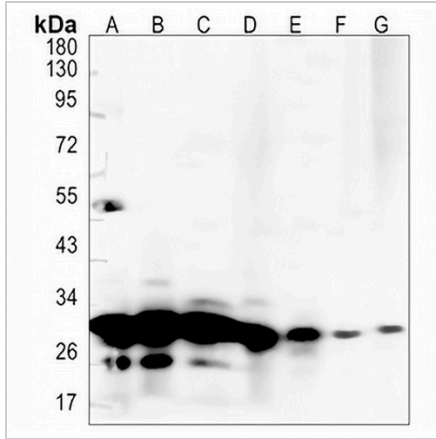
*Clone Number, Reactivity, Source/Host and Clonality can be found in the product name and Key Features section above.

DATASHEET

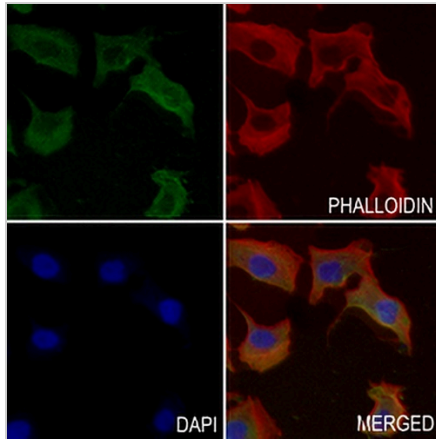
SF2 Rabbit Monoclonal Antibody(C1332)

CAT. NO. AMA00944

DATA



Western blot analysis of SF2 expression in K562 (A), MCF7 (B), HeLa (C), mouse liver (D), mouse kidney (E), rat liver (F), rat kidney (G) whole cell lysates. (Predicted band size: 27 kD; Observed band size: 27 kD)



Immunofluorescent analysis of SF2 staining in MCF7 cells. Formalin-fixed cells were permeabilized with 0.1% Triton X-100 in TBS for 5-10 minutes and blocked with 3% BSA-PBS for 30 minutes at room temperature. Cells were probed with the primary antibody in 3% BSA-PBS and incubated overnight at 4 °C in a humidified chamber. Cells were washed with PBST and incubated with a AREX® Fluor 488 -conjugated secondary antibody (green) in PBS at room temperature in the dark. Phalloidin - AREX® Fluor 594 was used to stain Actin filaments (red). DAPI was used to stain the cell nuclei (blue).

STORAGE

Store at 4°C short term. For long term storage, store at -20°C, avoiding freeze/thaw cycles.

NOTE

For Research Use Only. Not for diagnostic, therapeutics, prophylactic or in vivo use.