

**DATASHEET**

**WDR5 Rabbit Monoclonal Antibody(C1333)**

CAT. NO. AMA00945

**KEY FEATURES**

Target	WDR5	Source / Host	Rabbit
Reactivity	Human, Mouse, Rat	Clonality	Monoclonal
Applications	WB	Conjugation	Unconjugated
Form / Buffer	Liquid in PBS, pH 7.4, containing 50% glycerol, 0.2% BSA and 0.01% sodium azide.	Storage	at-20°C

**BACKGROUND**

Contributes to histone modification . May position the N-terminus of histone H3 for efficient trimethylation at 'Lys-4' . As part of the MLL1/MLL complex it is involved in methylation and dimethylation at 'Lys-4' of histone H3 . H3 'Lys-4' methylation represents a specific tag for epigenetic transcriptional activation . As part of the NSL complex it may be involved in acetylation of nucleosomal histone H4 on several lysine residues . May regulate osteoblasts differentiation . In association with RBBP5 and ASH2L, stimulates the histone methyltransferase activities of KMT2A, KMT2B, KMT2C, KMT2D, SETD1A and SETD1B .

**APPLICATION**

To ensure optimal assay performance, AREX recommends conducting reagent titration tailored to each testing system for optimal detection results.

WB	1:500 - 1:1000
----	----------------

\*Results are sample-specific. Please refer to your local assay conditions and test parameters for reference.

**PRODUCT OVERVIEW**

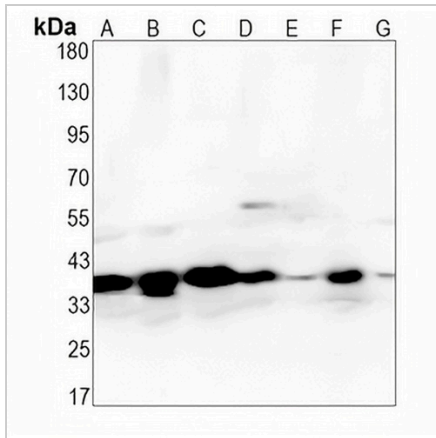
Description	Recombinant rabbit monoclonal antibody to WDR5
Specificity	Recognizes endogenous levels of WDR5 protein
Antibody Type	Primary antibody, Recombinant
Immunogen	KLH-conjugated synthetic peptide encompassing a sequence within human WDR5 protein. The exact sequence is proprietary.
Purification	The antibody was purified by immunogen affinity chromatography.
Molecular Weight	Predicted: 36 kD; Observed: 36 kD
Form/Buffer	Liquid in PBS, pH 7.4, containing 50% glycerol, 0.2% BSA and 0.01% sodium azide.
Alternative Names	BIG3; WD repeat-containing protein 5; BMP2-induced 3-kb gene protein
Gene Symbol	WDR5
Entrez Gene	11091(Human); 140858(Mouse); 362093(Rat)
SwissProt	P61964(Human); P61965(Mouse); Q498M4(Rat)

\*AREX continuously optimizes our products. Webpage content may not reflect the latest updates. For inquiries, please contact [info@arexbio.com](mailto:info@arexbio.com) or your local distributor.

\*Clone Number, Reactivity, Source/Host and Clonality can be found in the product name and Key Features section above.

**DATASHEET****WDR5 Rabbit Monoclonal Antibody(C1333)**

CAT. NO. AMA00945

**DATA**

Western blot analysis of WDR5 expression in MCF7 (A), HeLa (B), THP1 (C), mouse liver (D), mouse muscle (E), rat liver (F), rat muscle (G) whole cell lysates. (Predicted band size: 36 kD; Observed band size: 36 kD)

**STORAGE**

Store at 4°C short term. For long term storage, store at -20°C, avoiding freeze/thaw cycles.

**NOTE**

For Research Use Only. Not for diagnostic, therapeutics, prophylactic or in vivo use.