

DATASHEET

SMYD3 Rabbit Monoclonal Antibody(C1334)

CAT. NO. AMA00946

KEY FEATURES

Target	SMYD3	Source / Host	Rabbit
Reactivity	Human	Clonality	Monoclonal
Applications	WB	Conjugation	Unconjugated
Form / Buffer	Liquid in PBS, pH 7.4, containing 50% glycerol, 0.2% BSA and 0.01% sodium azide.	Storage	at-20°C

BACKGROUND

Histone methyltransferase. Specifically methylates 'Lys-4' of histone H3, inducing di- and tri-methylation, but not monomethylation . Also methylates 'Lys-5' of histone H4 . Plays an important role in transcriptional activation as a member of an RNA polymerase complex . Binds DNA containing 5'-CCCTCC-3' or 5'-GAGGGG-3' sequences .

APPLICATION

To ensure optimal assay performance, AREX recommends conducting reagent titration tailored to each testing system for optimal detection results.

WB	1:500 - 1:1000
----	----------------

*Results are sample-specific. Please refer to your local assay conditions and test parameters for reference.

PRODUCT OVERVIEW

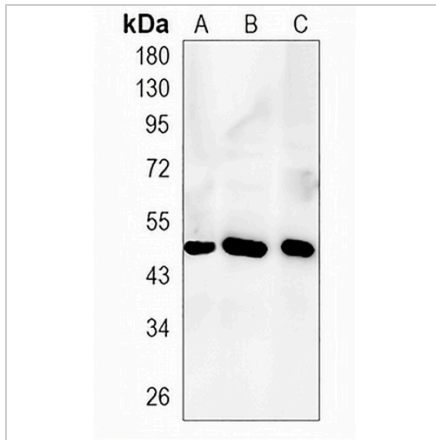
Description	Recombinant rabbit monoclonal antibody to SMYD3
Specificity	Recognizes endogenous levels of SMYD3 protein
Antibody Type	Primary antibody, Recombinant
Immunogen	KLH-conjugated synthetic peptide encompassing a sequence within human SMYD3 protein. The exact sequence is proprietary.
Purification	The antibody was purified by immunogen affinity chromatography.
Molecular Weight	Predicted: 49 kD; Observed: 49 kD
Form/Buffer	Liquid in PBS, pH 7.4, containing 50% glycerol, 0.2% BSA and 0.01% sodium azide.
Alternative Names	ZMYND1; ZNFN3A1; Histone-lysine N-methyltransferase SMYD3; SET and MYND domain-containing protein 3; Zinc finger MYND domain-containing protein 1
Gene Symbol	SMYD3
Entrez Gene	64754(Human)
SwissProt	Q9H7B4(Human)

*AREX continuously optimizes our products. Webpage content may not reflect the latest updates. For inquiries, please contact info@arexbio.com or your local distributor.

*Clone Number, Reactivity, Source/Host and Clonality can be found in the product name and Key Features section above.

DATASHEET**SMYD3 Rabbit Monoclonal Antibody(C1334)**

CAT. NO. AMA00946

DATA

Western blot analysis of SMYD3 expression in K562 (A), MCF7 (B), HeLa (C) whole cell lysates. (Predicted band size: 49 kD; Observed band size: 49 kD)

STORAGE

Store at 4°C short term. For long term storage, store at -20°C, avoiding freeze/thaw cycles.

NOTE

For Research Use Only. Not for diagnostic, therapeutics, prophylactic or in vivo use.