

DATASHEET

eIF2 alpha Rabbit Monoclonal Antibody(C1342)

CAT. NO. AMA00954

KEY FEATURES

Target	eIF2 alpha	Source / Host	Rabbit
Reactivity	Human, Mouse	Clonality	Monoclonal
Applications	WB, IF/ICC	Conjugation	Unconjugated
Form / Buffer	Liquid in PBS, pH 7.4, containing 50% glycerol, 0.2% BSA and 0.01% sodium azide.	Storage	at-20°C

BACKGROUND

Functions in the early steps of protein synthesis of a small number of specific mRNAs. Acts by directing the binding of methionyl-tRNA_i to 40S ribosomal subunits. In contrast to the eIF-2 complex, it binds methionyl-tRNA_i to 40S subunits in a codon-dependent manner, whereas the eIF-2 complex binds methionyl-tRNA_i to 40S subunits in a GTP-dependent manner.

APPLICATION

To ensure optimal assay performance, AREX recommends conducting reagent titration tailored to each testing system for optimal detection results.

WB	1:500 - 1:1000
IF/ICC	1:50 - 1:200

*Results are sample-specific. Please refer to your local assay conditions and test parameters for reference.

PRODUCT OVERVIEW

Description	Recombinant rabbit monoclonal antibody to eIF2 alpha
Specificity	Recognizes endogenous levels of eIF2 alpha protein
Antibody Type	Primary antibody, Recombinant
Immunogen	KLH-conjugated synthetic peptide encompassing a sequence within human eIF2 alpha protein. The exact sequence is proprietary.
Purification	The antibody was purified by immunogen affinity chromatography.
Molecular Weight	Predicted: 64 kD; Observed: 65 kD
Form/Buffer	Liquid in PBS, pH 7.4, containing 50% glycerol, 0.2% BSA and 0.01% sodium azide.
Alternative Names	Eukaryotic translation initiation factor 2A; eIF-2A; 65 kDa eukaryotic translation initiation factor 2A
Gene Symbol	EIF2A
Entrez Gene	83939(Human); 229317(Mouse)
SwissProt	Q9BY44(Human); Q8BJW6(Mouse)

*AREX continuously optimizes our products. Webpage content may not reflect the latest updates. For inquiries, please contact info@arexbio.com or your local distributor.

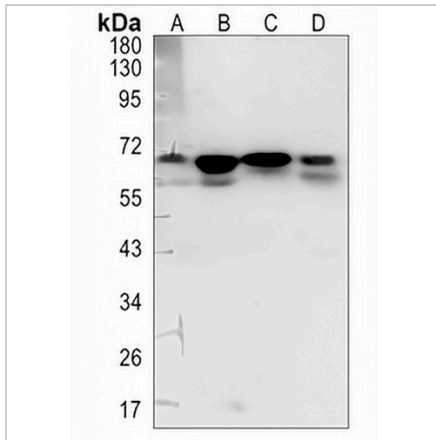
*Clone Number, Reactivity, Source/Host and Clonality can be found in the product name and Key Features section above.

DATASHEET

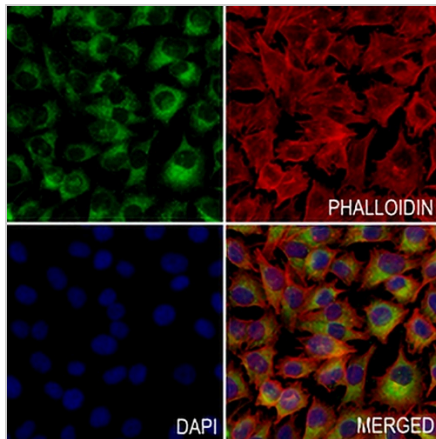
eIF2 alpha Rabbit Monoclonal Antibody(C1342)

CAT. NO. AMA00954

DATA



Western blot analysis of eIF2 alpha expression in K562 (A), MCF7 (B), HeLa (C), mouse liver (D) whole cell lysates. (Predicted band size: 64 kD; Observed band size: 65 kD)



Immunofluorescent analysis of eIF2 alpha staining in A375 cells. Formalin-fixed cells were permeabilized with 0.1% Triton X-100 in TBS for 5-10 minutes and blocked with 3% BSA-PBS for 30 minutes at room temperature. Cells were probed with the primary antibody in 3% BSA-PBS and incubated overnight at 4 °C in a humidified chamber. Cells were washed with PBST and incubated with a AREX® Fluor 488 -conjugated secondary antibody (green) in PBS at room temperature in the dark. Phalloidin - AREX® Fluor 594 was used to stain Actin filaments (red). DAPI was used to stain the cell nuclei (blue).

STORAGE

Store at 4°C short term. For long term storage, store at -20°C, avoiding freeze/thaw cycles.

NOTE

For Research Use Only. Not for diagnostic, therapeutics, prophylactic or in vivo use.