

## DATASHEET

# PSMC5 Rabbit Monoclonal Antibody(C1348)

CAT. NO. AMA00960

### KEY FEATURES

Target	PSMC5	Source / Host	Rabbit
Reactivity	Human, Mouse, Rat	Clonality	Monoclonal
Applications	WB, IHC	Conjugation	Unconjugated
Form / Buffer	Liquid in PBS, pH 7.4, containing 50% glycerol, 0.2% BSA and 0.01% sodium azide.	Storage	at-20°C

### BACKGROUND

Component of the 26S proteasome, a multiprotein complex involved in the ATP-dependent degradation of ubiquitinated proteins. This complex plays a key role in the maintenance of protein homeostasis by removing misfolded or damaged proteins, which could impair cellular functions, and by removing proteins whose functions are no longer required. Therefore, the proteasome participates in numerous cellular processes, including cell cycle progression, apoptosis, or DNA damage repair. PSMC5 belongs to the heterohexameric ring of AAA (ATPases associated with diverse cellular activities) proteins that unfolds ubiquitinated target proteins that are concurrently translocated into a proteolytic chamber and degraded into peptides.

### APPLICATION

To ensure optimal assay performance, AREX recommends conducting reagent titration tailored to each testing system for optimal detection results.

WB	1:500 - 1:1000
IHC	1:50 - 1:200

\*Results are sample-specific. Please refer to your local assay conditions and test parameters for reference.

### PRODUCT OVERVIEW

Description	Recombinant rabbit monoclonal antibody to PSMC5
Specificity	Recognizes endogenous levels of PSMC5 protein
Antibody Type	Primary antibody, Recombinant
Immunogen	KLH-conjugated synthetic peptide encompassing a sequence within human PSMC5 protein. The exact sequence is proprietary.
Purification	The antibody was purified by immunogen affinity chromatography.
Molecular Weight	Predicted: 45 kD; Observed: 46 kD
Form/Buffer	Liquid in PBS, pH 7.4, containing 50% glycerol, 0.2% BSA and 0.01% sodium azide.
Alternative Names	SUG1; 26S protease regulatory subunit 8; 26S proteasome AAA-ATPase subunit RPT6; Proteasome 26S subunit ATPase 5; Proteasome subunit p45; Thyroid hormone receptor-interacting protein 1; TRIP1; p45/SUG
Gene Symbol	PSMC5
Entrez Gene	5705(Human); 19184(Mouse); 81827(Rat)
SwissProt	P62195(Human); P62196(Mouse); P62198(Rat)

\*AREX continuously optimizes our products. Webpage content may not reflect the latest updates. For inquiries, please contact [info@arexbio.com](mailto:info@arexbio.com) or your local distributor.

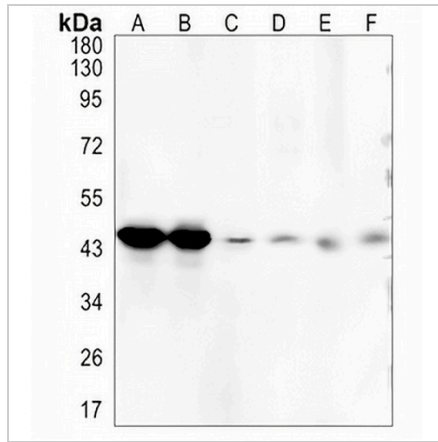
\*Clone Number, Reactivity, Source/Host and Clonality can be found in the product name and Key Features section above.

**DATASHEET**

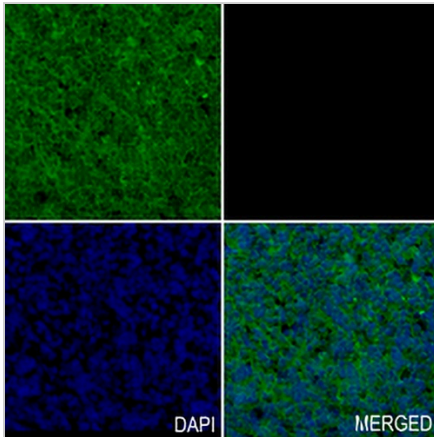
**PSMC5 Rabbit Monoclonal Antibody(C1348)**

CAT. NO. AMA00960

**DATA**



Western blot analysis of PSMC5 expression in Jurkat (A), K562 (B), mouse kidney (C), mouse muscle (D), rat kidney (E), rat muscle (F) whole cell lysates. (Predicted band size: 45 kD; Observed band size: 46 kD)



Immunohistochemical analysis of PSMC5 staining in human tonsil formalin fixed paraffin embedded tissue section. The section was pre-treated using heat mediated antigen retrieval with sodium citrate buffer (pH 6.0). The section was then incubated with the antibody at room temperature and detected using an HRP conjugated compact polymer system. DAB was used as the chromogen. The section was then counterstained with haematoxylin and mounted with DPX.

**STORAGE**

Store at 4°C short term. For long term storage, store at -20°C, avoiding freeze/thaw cycles.

**NOTE**

For Research Use Only. Not for diagnostic, therapeutics, prophylactic or in vivo use.