

## DATASHEET

# PSMB10 Rabbit Monoclonal Antibody(C1356)

CAT. NO. AMA00968

### KEY FEATURES

|               |  |               |              |
|---------------|--|---------------|--------------|
| Target        | PSMB10   | Source / Host | Rabbit       |
| Reactivity    | Human, Mouse, Rat  | Clonality     | Monoclonal   |
| Applications  | WB, IHC  | Conjugation   | Unconjugated |
| Form / Buffer | Liquid in PBS, pH 7.4, containing 50% glycerol, 0.2% BSA and 0.01% sodium azide. | Storage       | at-20°C      |

### BACKGROUND

The proteasome is a multicatalytic proteinase complex which is characterized by its ability to cleave peptides with Arg, Phe, Tyr, Leu, and Glu adjacent to the leaving group at neutral or slightly basic pH. The proteasome has an ATP-dependent proteolytic activity. This subunit is involved in antigen processing to generate class I binding peptides.

### APPLICATION

To ensure optimal assay performance, AREX recommends conducting reagent titration tailored to each testing system for optimal detection results.

|     |                |
|-----|----------------|
| WB  | 1:500 - 1:1000 |
| IHC | 1:50 - 1:200   |

\*Results are sample-specific. Please refer to your local assay conditions and test parameters for reference.

### PRODUCT OVERVIEW

|                   |   |
|-------------------|---|
| Description       | Recombinant rabbit monoclonal antibody to PSMB10  |
| Specificity       | Recognizes endogenous levels of PSMB10 protein  |
| Antibody Type     | Primary antibody, Recombinant   |
| Immunogen         | KLH-conjugated synthetic peptide encompassing a sequence within human PSMB10 protein. The exact sequence is proprietary.  |
| Purification      | The antibody was purified by immunogen affinity chromatography.   |
| Molecular Weight  | Predicted: 28 kD; Observed: 27 kD   |
| Form/Buffer       | Liquid in PBS, pH 7.4, containing 50% glycerol, 0.2% BSA and 0.01% sodium azide.  |
| Alternative Names | LMP10; MECL1; Proteasome subunit beta type-10; Low molecular mass protein 10; Macropain subunit MECL1; Multicatalytic endopeptidase complex subunit MECL1; Proteasome MECL1; Proteasome subunit beta-2i |
| Gene Symbol       | PSMB10  |
| Entrez Gene       | 5699(Human); 19171(Mouse); 291983(Rat)  |
| SwissProt         | P40306(Human); O35955(Mouse); Q4KM35(Rat)   |

\*AREX continuously optimizes our products. Webpage content may not reflect the latest updates. For inquiries, please contact [info@arexbio.com](mailto:info@arexbio.com) or your local distributor.

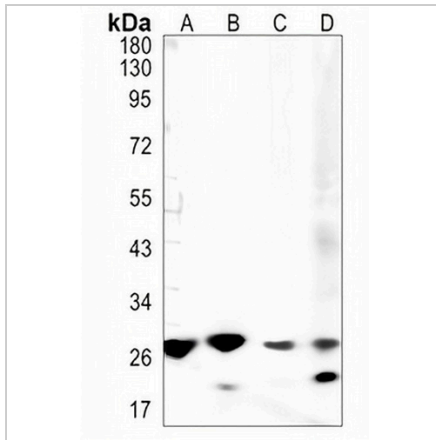
\*Clone Number, Reactivity, Source/Host and Clonality can be found in the product name and Key Features section above.

**DATASHEET**

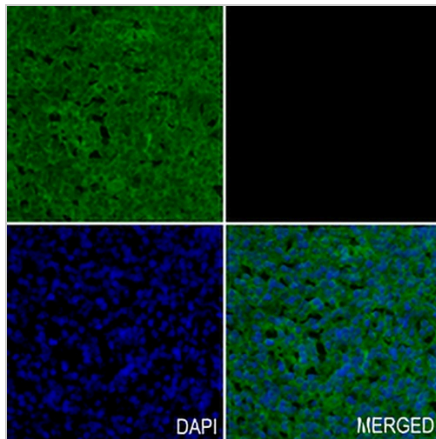
**PSMB10 Rabbit Monoclonal Antibody(C1356)**

CAT. NO. AMA00968

**DATA**



Western blot analysis of PSMB10 expression in Jurkat (A), mouse liver (B), rat liver (C), rat kidney (D) whole cell lysates. (Predicted band size: 28 kD; Observed band size: 27 kD)



Immunohistochemical analysis of PSMB10 staining in human tonsil formalin fixed paraffin embedded tissue section. The section was pre-treated using heat mediated antigen retrieval with sodium citrate buffer (pH 6.0). The section was then incubated with the antibody at room temperature and detected using an HRP conjugated compact polymer system. DAB was used as the chromogen. The section was then counterstained with haematoxylin and mounted with DPX.

**STORAGE**

Store at 4°C short term. For long term storage, store at -20°C, avoiding freeze/thaw cycles.

**NOTE**

For Research Use Only. Not for diagnostic, therapeutics, prophylactic or in vivo use.