

DATASHEET

TMEM43 Rabbit Monoclonal Antibody(C1357)

CAT. NO. AMA00969

KEY FEATURES

Target	TMEM43	Source / Host	Rabbit
Reactivity	Human, Mouse, Rat	Clonality	Monoclonal
Applications	WB	Conjugation	Unconjugated
Form / Buffer	Liquid in PBS, pH 7.4, containing 50% glycerol, 0.2% BSA and 0.01% sodium azide.	Storage	at-20°C

BACKGROUND

May have an important role in maintaining nuclear envelope structure by organizing protein complexes at the inner nuclear membrane. Required for retaining emerin at the inner nuclear membrane . Plays a role in the modulation of innate immune signaling through the cGAS-STING pathway by interacting with RNF26 . In addition, functions as a critical signaling component in mediating NF-kappa-B activation by acting downstream of EGFR and upstream of CARD10 . Contributes to passive conductance current in cochlear glia-like supporting cells, mediated by gap junctions and necessary for hearing and speech discrimination .

APPLICATION

To ensure optimal assay performance, AREX recommends conducting reagent titration tailored to each testing system for optimal detection results.

WB	1:500 - 1:1000
----	----------------

*Results are sample-specific. Please refer to your local assay conditions and test parameters for reference.

PRODUCT OVERVIEW

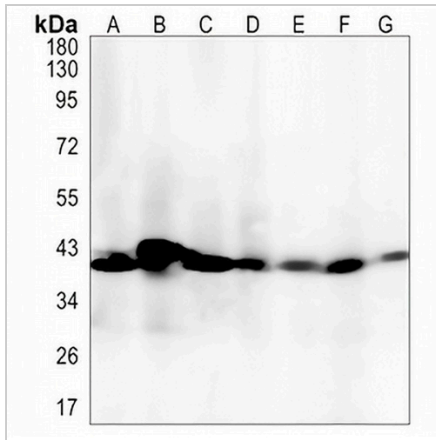
Description	Recombinant rabbit monoclonal antibody to TMEM43
Specificity	Recognizes endogenous levels of TMEM43 protein
Antibody Type	Primary antibody, Recombinant
Immunogen	KLH-conjugated synthetic peptide encompassing a sequence within human TMEM43 protein. The exact sequence is proprietary.
Purification	The antibody was purified by immunogen affinity chromatography.
Molecular Weight	Predicted: 44 kD; Observed: 43 kD
Form/Buffer	Liquid in PBS, pH 7.4, containing 50% glycerol, 0.2% BSA and 0.01% sodium azide.
Alternative Names	Transmembrane protein 43; Protein LUMA
Gene Symbol	TMEM43
Entrez Gene	79188(Human); 74122(Mouse); 362401(Rat)
SwissProt	Q9BTV4(Human); Q9DBS1(Mouse); Q5XIP9(Rat)

*AREX continuously optimizes our products. Webpage content may not reflect the latest updates. For inquiries, please contact info@arexbio.com or your local distributor.

*Clone Number, Reactivity, Source/Host and Clonality can be found in the product name and Key Features section above.

DATASHEET**TMEM43 Rabbit Monoclonal Antibody(C1357)**

CAT. NO. AMA00969

DATA

Western blot analysis of TMEM43 expression in MCF7 (A), HeLa (B), K562 (C), mouse kidney (D), mouse muscle (E), rat kidney (F), rat muscle (G) whole cell lysates. (Predicted band size: 44 kD; Observed band size: 43 kD)

STORAGE

Store at 4°C short term. For long term storage, store at -20°C, avoiding freeze/thaw cycles.

NOTE

For Research Use Only. Not for diagnostic, therapeutics, prophylactic or in vivo use.