

DATASHEET

PREPL Rabbit Monoclonal Antibody(C1361)

CAT. NO. AMA00973

KEY FEATURES

Target	PREPL	Source / Host	Rabbit
Reactivity	Human, Mouse, Rat	Clonality	Monoclonal
Applications	WB, IF/ICC	Conjugation	Unconjugated
Form / Buffer	Liquid in PBS, pH 7.4, containing 50% glycerol, 0.2% BSA and 0.01% sodium azide.	Storage	at-20°C

BACKGROUND

Serine peptidase whose precise substrate specificity remains unclear . Does not cleave peptides after a arginine or lysine residue . Regulates trans-Golgi network morphology and sorting by regulating the membrane binding of the AP-1 complex . May play a role in the regulation of synaptic vesicle exocytosis .

APPLICATION

To ensure optimal assay performance, AREX recommends conducting reagent titration tailored to each testing system for optimal detection results.

WB	1:500 - 1:1000
IF/ICC	1:50 - 1:200

*Results are sample-specific. Please refer to your local assay conditions and test parameters for reference.

PRODUCT OVERVIEW

Description	Recombinant rabbit monoclonal antibody to PREPL
Specificity	Recognizes endogenous levels of PREPL protein
Antibody Type	Primary antibody, Recombinant
Immunogen	KLH-conjugated synthetic peptide encompassing a sequence within human PREPL protein. The exact sequence is proprietary.
Purification	The antibody was purified by immunogen affinity chromatography.
Molecular Weight	Predicted: 83 kD; Observed: 70 kD
Form/Buffer	Liquid in PBS, pH 7.4, containing 50% glycerol, 0.2% BSA and 0.01% sodium azide.
Alternative Names	KIAA0436; Prolyl endopeptidase-like; Prolylendopeptidase-like
Gene Symbol	PREPL
Entrez Gene	9581(Human); 213760(Mouse); 298771(Rat)
SwissProt	Q4J6C6(Human); Q8C167(Mouse); Q5HZA6(Rat)

*AREX continuously optimizes our products. Webpage content may not reflect the latest updates. For inquiries, please contact info@arexbio.com or your local distributor.

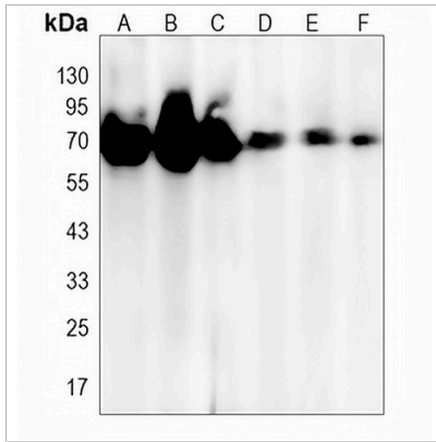
*Clone Number, Reactivity, Source/Host and Clonality can be found in the product name and Key Features section above.

DATASHEET

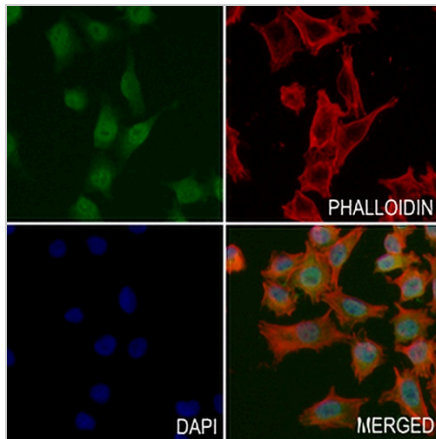
PREPL Rabbit Monoclonal Antibody(C1361)

CAT. NO. AMA00973

DATA



Western blot analysis of PREPL expression in K562 (A), MCF7 (B), HeLa (C), mouse liver (D), rat liver (E), rat kidney (F) whole cell lysates. (Predicted band size: 83 kD; Observed band size: 70 kD)



Immunofluorescent analysis of PREPL staining in A375 cells. Formalin-fixed cells were permeabilized with 0.1% Triton X-100 in TBS for 5-10 minutes and blocked with 3% BSA-PBS for 30 minutes at room temperature. Cells were probed with the primary antibody in 3% BSA-PBS and incubated overnight at 4 °C in a humidified chamber. Cells were washed with PBST and incubated with a AREX® Fluor 488 -conjugated secondary antibody (green) in PBS at room temperature in the dark. Phalloidin - AREX® Fluor 594 was used to stain Actin filaments (red). DAPI was used to stain the cell nuclei (blue).

STORAGE

Store at 4°C short term. For long term storage, store at -20°C, avoiding freeze/thaw cycles.

NOTE

For Research Use Only. Not for diagnostic, therapeutics, prophylactic or in vivo use.