

**DATASHEET**

**GLUD1 Rabbit Monoclonal Antibody(C1369)**

CAT. NO. AMA00981

**KEY FEATURES**

Target	GLUD1	Source / Host	Rabbit
Reactivity	Human, Mouse, Rat	Clonality	Monoclonal
Applications	WB	Conjugation	Unconjugated
Form / Buffer	Liquid in PBS, pH 7.4, containing 50% glycerol, 0.2% BSA and 0.01% sodium azide.	Storage	at-20°C

**BACKGROUND**

Mitochondrial glutamate dehydrogenase that catalyzes the conversion of L-glutamate into alpha-ketoglutarate. Plays a key role in glutamine anaplerosis by producing alpha-ketoglutarate, an important intermediate in the tricarboxylic acid cycle . Plays a role in insulin homeostasis . May be involved in learning and memory reactions by increasing the turnover of the excitatory neurotransmitter glutamate .

**APPLICATION**

To ensure optimal assay performance, AREX recommends conducting reagent titration tailored to each testing system for optimal detection results.

WB	1:500 - 1:1000
----	----------------

\*Results are sample-specific. Please refer to your local assay conditions and test parameters for reference.

**PRODUCT OVERVIEW**

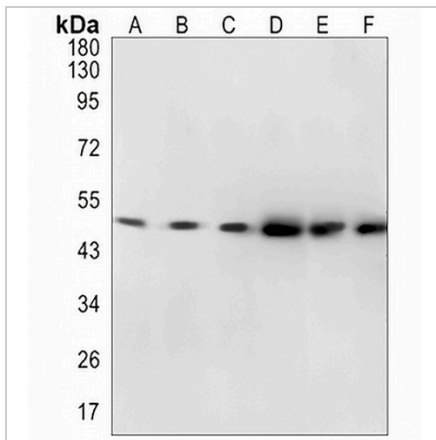
Description	Recombinant rabbit monoclonal antibody to GLUD1
Specificity	Recognizes endogenous levels of GLUD1 protein
Antibody Type	Primary antibody, Recombinant
Immunogen	KLH-conjugated synthetic peptide encompassing a sequence within human GLUD1 protein. The exact sequence is proprietary.
Purification	The antibody was purified by immunogen affinity chromatography.
Molecular Weight	Predicted: 61 kD; Observed: 50 kD
Form/Buffer	Liquid in PBS, pH 7.4, containing 50% glycerol, 0.2% BSA and 0.01% sodium azide.
Alternative Names	GLUD; Glutamate dehydrogenase 1, mitochondrial; GDH 1
Gene Symbol	GLUD1
Entrez Gene	2746(Human); 14661(Mouse); 24399(Rat)
SwissProt	P00367(Human); P26443(Mouse); P10860(Rat)

\*AREX continuously optimizes our products. Webpage content may not reflect the latest updates. For inquiries, please contact [info@arexbio.com](mailto:info@arexbio.com) or your local distributor.

\*Clone Number, Reactivity, Source/Host and Clonality can be found in the product name and Key Features section above.

**DATASHEET****GLUD1 Rabbit Monoclonal Antibody(C1369)**

CAT. NO. AMA00981

**DATA**

Western blot analysis of GLUD1 expression in MCF7 (A), Jurkat (B), K562 (C), mouse liver (D), rat liver (E), rat kidney (F) whole cell lysates. (Predicted band size: 61 kD; Observed band size: 50 kD)

**STORAGE**

Store at 4°C short term. For long term storage, store at -20°C, avoiding freeze/thaw cycles.

**NOTE**

For Research Use Only. Not for diagnostic, therapeutics, prophylactic or in vivo use.