

DATASHEET

CD36 Rabbit Monoclonal Antibody(C1371)

CAT. NO. AMA00983

KEY FEATURES

Target	CD36	Source / Host	Rabbit
Reactivity	Human, Mouse, Rat	Clonality	Monoclonal
Applications	WB, IHC, FC	Conjugation	Unconjugated
Form / Buffer	Liquid in PBS, pH 7.4, containing 50% glycerol, 0.2% BSA and 0.01% sodium azide.	Storage	at-20°C

BACKGROUND

Acts as a lysosomal receptor for glucosylceramidase (GBA1) targeting.

APPLICATION

To ensure optimal assay performance, AREX recommends conducting reagent titration tailored to each testing system for optimal detection results.

WB	1:500 - 1:1000
IHC	1:50 - 1:200
FC	1:10 - 1:50

*Results are sample-specific. Please refer to your local assay conditions and test parameters for reference.

PRODUCT OVERVIEW

Description	Recombinant rabbit monoclonal antibody to CD36
Specificity	Recognizes endogenous levels of CD36 protein
Antibody Type	Primary antibody, Recombinant
Immunogen	KLH-conjugated synthetic peptide encompassing a sequence within human CD36 protein. The exact sequence is proprietary.
Purification	The antibody was purified by immunogen affinity chromatography.
Molecular Weight	Predicted: 54 kD; Observed: 77 kD
Form/Buffer	Liquid in PBS, pH 7.4, containing 50% glycerol, 0.2% BSA and 0.01% sodium azide.
Alternative Names	CD36L2; LIMP2; LIMP2II; Lysosome membrane protein 2; 85 kDa lysosomal membrane sialoglycoprotein; LGP85; CD36 antigen-like 2; Lysosome membrane protein II; LIMP II; Scavenger receptor class B member 2; CD36
Gene Symbol	SCARB2
Entrez Gene	950(Human); 12492(Mouse); 117106(Rat)
SwissProt	Q14108(Human); O35114(Mouse); P27615(Rat)

*AREX continuously optimizes our products. Webpage content may not reflect the latest updates. For inquiries, please contact info@arexbio.com or your local distributor.

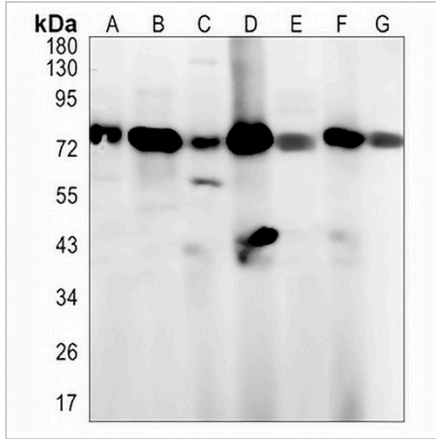
*Clone Number, Reactivity, Source/Host and Clonality can be found in the product name and Key Features section above.

DATASHEET

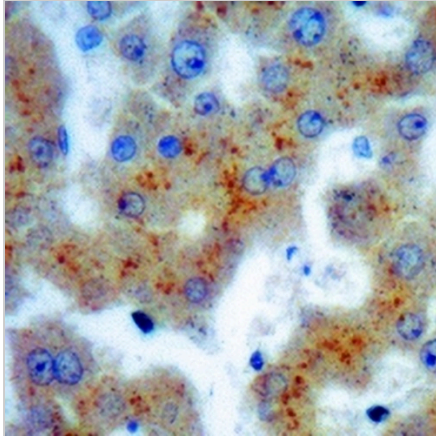
CD36 Rabbit Monoclonal Antibody(C1371)

CAT. NO. AMA00983

DATA



Western blot analysis of CD36 expression in MCF7 (A), HeLa (B), K562 (C), mouse liver (D), mouse muscle (E), rat liver (F), rat muscle (G) whole cell lysates. (Predicted band size: 54 kD; Observed band size: 77 kD)



Immunohistochemical analysis of CD36 staining in human liver formalin fixed paraffin embedded tissue section. The section was pre-treated using heat mediated antigen retrieval with sodium citrate buffer (pH 6.0). The section was then incubated with the antibody at room temperature and detected using an HRP conjugated compact polymer system. DAB was used as the chromogen. The section was then counterstained with haematoxylin and mounted with DPX.

STORAGE

Store at 4°C short term. For long term storage, store at -20°C, avoiding freeze/thaw cycles.

NOTE

For Research Use Only. Not for diagnostic, therapeutics, prophylactic or in vivo use.