

DATASHEET

Na⁺/K⁺-ATPase beta1 Rabbit Monoclonal Antibody(C1374)

CAT. NO. AMA00986

KEY FEATURES

Target	Na ⁺ /K ⁺ -ATPase beta1	Source / Host	Rabbit
Reactivity	Human, Mouse, Rat	Clonality	Monoclonal
Applications	WB	Conjugation	Unconjugated
Form / Buffer	Liquid in PBS, pH 7.4, containing 50% glycerol, 0.2% BSA and 0.01% sodium azide.	Storage	at-20°C

BACKGROUND

This is the non-catalytic component of the active enzyme, which catalyzes the hydrolysis of ATP coupled with the exchange of Na(+) and K(+) ions across the plasma membrane. The beta subunit regulates, through assembly of alpha/beta heterodimers, the number of sodium pumps transported to the plasma membrane and K(+) ions across the plasma membrane. The beta subunit regulates, through assembly of alpha/beta heterodimers, the number of sodium pumps transported to the plasma membrane . Plays a role in innate immunity by enhancing virus-triggered induction of interferons (IFNs) and interferon stimulated genes (ISGs). Mechanistically, enhances the ubiquitination of TRAF3 and TRAF6 as well as the phosphorylation of TAK1 and TBK1 .

APPLICATION

To ensure optimal assay performance, AREX recommends conducting reagent titration tailored to each testing system for optimal detection results.

WB	1:500 - 1:1000
----	----------------

*Results are sample-specific. Please refer to your local assay conditions and test parameters for reference.

PRODUCT OVERVIEW

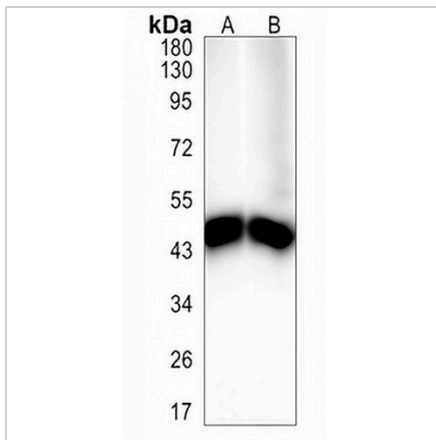
Description	Recombinant rabbit monoclonal antibody to Na ⁺ /K ⁺ -ATPase beta1
Specificity	Recognizes endogenous levels of Na ⁺ /K ⁺ -ATPase beta1 protein
Antibody Type	Primary antibody, Recombinant
Immunogen	KLH-conjugated synthetic peptide encompassing a sequence within human Na ⁺ /K ⁺ -ATPase beta1 protein. The exact sequence is proprietary.
Purification	The antibody was purified by immunogen affinity chromatography.
Molecular Weight	Predicted: 35 kD; Observed: 40-50 kD
Form/Buffer	Liquid in PBS, pH 7.4, containing 50% glycerol, 0.2% BSA and 0.01% sodium azide.
Alternative Names	ATP1B; Sodium/potassium-transporting ATPase subunit beta-1; Sodium/potassium-dependent ATPase subunit beta-1
Gene Symbol	ATP1B1
Entrez Gene	481(Human); 11931(Mouse); 25650(Rat)
SwissProt	P05026(Human); P14094(Mouse); P07340(Rat)

*AREX continuously optimizes our products. Webpage content may not reflect the latest updates. For inquiries, please contact info@arexbio.com or your local distributor.

*Clone Number, Reactivity, Source/Host and Clonality can be found in the product name and Key Features section above.

DATASHEET**Na⁺/K⁺-ATPase beta1 Rabbit Monoclonal Antibody(C1374)**

CAT. NO. AMA00986

DATA

Western blot analysis of Na⁺/K⁺-ATPase beta1 expression in mouse kidney (A), rat kidney (B) whole cell lysates. (Predicted band size: 35 kD; Observed band size: 40-50 kD)

STORAGE

Store at 4°C short term. For long term storage, store at -20°C, avoiding freeze/thaw cycles.

NOTE

For Research Use Only. Not for diagnostic, therapeutics, prophylactic or in vivo use.