

DATASHEET

ERP29 Rabbit Monoclonal Antibody(C1379)

CAT. NO. AMA00991

KEY FEATURES

Target	ERP29	Source / Host	Rabbit
Reactivity	Human, Mouse, Rat	Clonality	Monoclonal
Applications	WB	Conjugation	Unconjugated
Form / Buffer	Liquid in PBS, pH 7.4, containing 50% glycerol, 0.2% BSA and 0.01% sodium azide.	Storage	at-20°C

BACKGROUND

Does not seem to be a disulfide isomerase. Plays an important role in the processing of secretory proteins within the endoplasmic reticulum (ER), possibly by participating in the folding of proteins in the ER.

APPLICATION

To ensure optimal assay performance, AREX recommends conducting reagent titration tailored to each testing system for optimal detection results.

WB	1:500 - 1:1000
----	----------------

*Results are sample-specific. Please refer to your local assay conditions and test parameters for reference.

PRODUCT OVERVIEW

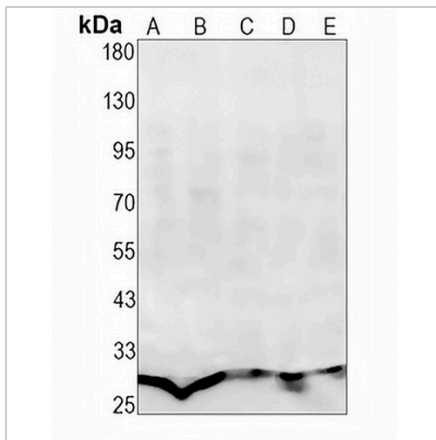
Description	Recombinant rabbit monoclonal antibody to ERP29
Specificity	Recognizes endogenous levels of ERP29 protein
Antibody Type	Primary antibody, Recombinant
Immunogen	KLH-conjugated synthetic peptide encompassing a sequence within human ERP29 protein. The exact sequence is proprietary.
Purification	The antibody was purified by immunogen affinity chromatography.
Molecular Weight	Predicted: 28 kD; Observed: 29 kD
Form/Buffer	Liquid in PBS, pH 7.4, containing 50% glycerol, 0.2% BSA and 0.01% sodium azide.
Alternative Names	C12orf8; ERP28; Endoplasmic reticulum resident protein 29; ERp29; Endoplasmic reticulum resident protein 28; ERp28; Endoplasmic reticulum resident protein 31; ERp31
Gene Symbol	ERP29
Entrez Gene	10961(Human); 67397(Mouse); 117030(Rat)
SwissProt	P30040(Human); P57759(Mouse); P52555(Rat)

*AREX continuously optimizes our products. Webpage content may not reflect the latest updates. For inquiries, please contact info@arexbio.com or your local distributor.

*Clone Number, Reactivity, Source/Host and Clonality can be found in the product name and Key Features section above.

DATASHEET**ERP29 Rabbit Monoclonal Antibody(C1379)**

CAT. NO. AMA00991

DATA

Western blot analysis of ERP29 expression in K562 (A), HepG2 (B), PC3 (C), mouse kidney (D), rat liver (E) whole cell lysates. (Predicted band size: 28 kD; Observed band size: 29 kD)

STORAGE

Store at 4°C short term. For long term storage, store at -20°C, avoiding freeze/thaw cycles.

NOTE

For Research Use Only. Not for diagnostic, therapeutics, prophylactic or in vivo use.