

## DATASHEET

# HIST1H1C Rabbit Monoclonal Antibody(C1381)

CAT. NO. AMA00993

### KEY FEATURES

Target	HIST1H1C	Source / Host	Rabbit
Reactivity	Human, Mouse, Rat	Clonality	Monoclonal
Applications	WB	Conjugation	Unconjugated
Form / Buffer	Liquid in PBS, pH 7.4, containing 50% glycerol, 0.2% BSA and 0.01% sodium azide.	Storage	at-20°C

### BACKGROUND

Histone H1 protein binds to linker DNA between nucleosomes forming the macromolecular structure known as the chromatin fiber. Histone H1-2 is required for the condensation of nucleosome chains into higher-order structured fibers. Compared to other histone H1 variants, H1-2 plays an essential role in nucleosome condensation: its absence leads to global chromatin decompaction, which is not observed when depleting other histone H1 variants. Histone H1-2 also acts as a histone reader: specifically recognizes and binds histone H3 trimethylated at 'lys-27' (H3K27me3). Histones H1 also promote formation of the H3K27me3 mark by the PRC2/EED-EZH2 complex, possibly by facilitating restoration of H3K27me3 post-replication.

### APPLICATION

To ensure optimal assay performance, AREX recommends conducting reagent titration tailored to each testing system for optimal detection results.

WB	1:500 - 1:1000
----	----------------

\*Results are sample-specific. Please refer to your local assay conditions and test parameters for reference.

### PRODUCT OVERVIEW

Description	Recombinant rabbit monoclonal antibody to HIST1H1C
Specificity	Recognizes endogenous levels of HIST1H1C protein
Antibody Type	Primary antibody, Recombinant
Immunogen	KLH-conjugated synthetic peptide encompassing a sequence within human HIST1H1C protein. The exact sequence is proprietary.
Purification	The antibody was purified by immunogen affinity chromatography.
Molecular Weight	Predicted: 21 kD; Observed: 29 kD
Form/Buffer	Liquid in PBS, pH 7.4, containing 50% glycerol, 0.2% BSA and 0.01% sodium azide.
Alternative Names	H1F2; Histone H1.2; Histone H1c; Histone H1d; Histone H1s-1
Gene Symbol	HIST1H1C
Entrez Gene	3006(Human); 50708(Mouse)
SwissProt	P16403(Human); P15864(Mouse)

\*AREX continuously optimizes our products. Webpage content may not reflect the latest updates. For inquiries, please contact [info@arexbio.com](mailto:info@arexbio.com) or your local distributor.

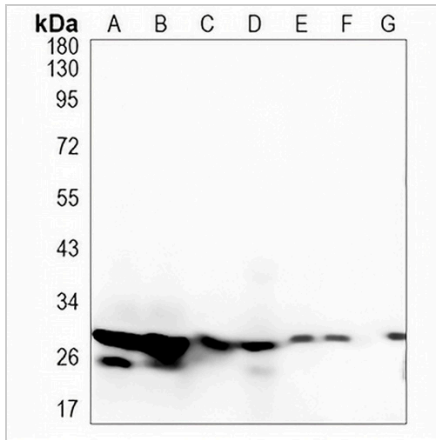
\*Clone Number, Reactivity, Source/Host and Clonality can be found in the product name and Key Features section above.

**DATASHEET**

**HIST1H1C Rabbit Monoclonal Antibody(C1381)**

CAT. NO. AMA00993

**DATA**



**STORAGE**

Store at 4°C short term. For long term storage, store at -20°C, avoiding freeze/thaw cycles.

**NOTE**

For Research Use Only. Not for diagnostic, therapeutics, prophylactic or in vivo use.