

DATASHEET

ANP32B Rabbit Monoclonal Antibody(C1396)

CAT. NO. AMA01008

KEY FEATURES

Target	ANP32B	Source / Host	Rabbit
Reactivity	Human, Mouse, Rat	Clonality	Monoclonal
Applications	WB	Conjugation	Unconjugated
Form / Buffer	Liquid in PBS, pH 7.4, containing 50% glycerol, 0.2% BSA and 0.01% sodium azide.	Storage	at-20°C

BACKGROUND

Multifunctional protein that is involved in the regulation of many processes including cell proliferation, apoptosis, cell cycle progression or transcription . Regulates the proliferation of neuronal stem cells, differentiation of leukemic cells and progression from G1 to S phase of the cell cycle. As negative regulator of caspase-3-dependent apoptosis, may act as an antagonist of ANP32A in regulating tissue homeostasis . Exhibits histone chaperone properties, able to recruit histones to certain promoters, thus regulating the transcription of specific genes . Also plays an essential role in the nucleocytoplasmic transport of specific mRNAs via the uncommon nuclear mRNA export receptor XPO1/CRM1 .

APPLICATION

To ensure optimal assay performance, AREX recommends conducting reagent titration tailored to each testing system for optimal detection results.

WB	1:500 - 1:1000
----	----------------

*Results are sample-specific. Please refer to your local assay conditions and test parameters for reference.

PRODUCT OVERVIEW

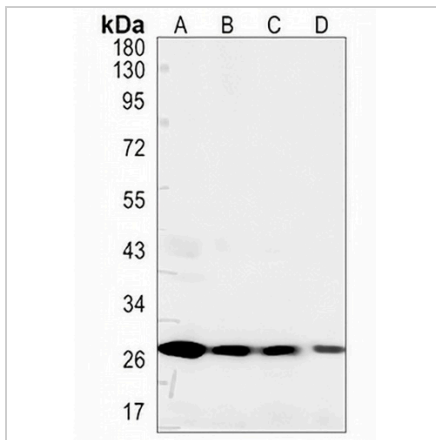
Description	Recombinant rabbit monoclonal antibody to ANP32B
Specificity	Recognizes endogenous levels of ANP32B protein
Antibody Type	Primary antibody, Recombinant
Immunogen	KLH-conjugated synthetic peptide encompassing a sequence within human ANP32B protein. The exact sequence is proprietary.
Purification	The antibody was purified by immunogen affinity chromatography.
Molecular Weight	Predicted: 28 kD; Observed: 29 kD
Form/Buffer	Liquid in PBS, pH 7.4, containing 50% glycerol, 0.2% BSA and 0.01% sodium azide.
Alternative Names	APRIL; PHAPI2; Acidic leucine-rich nuclear phosphoprotein 32 family member B; Acidic protein rich in leucines; Putative HLA-DR-associated protein I-2; PHAPI2; Silver-stainable protein SSP29
Gene Symbol	ANP32B
Entrez Gene	10541(Human); 67628(Mouse); 170724(Rat)
SwissProt	Q92688(Human); Q9EST5(Mouse); Q9EST6(Rat)

*AREX continuously optimizes our products. Webpage content may not reflect the latest updates. For inquiries, please contact info@arexbio.com or your local distributor.

*Clone Number, Reactivity, Source/Host and Clonality can be found in the product name and Key Features section above.

DATASHEET**ANP32B Rabbit Monoclonal Antibody(C1396)**

CAT. NO. AMA01008

DATA

Western blot analysis of ANP32B expression in K562 (A), Jurkat (B), mouse liver (C), rat liver (D) whole cell lysates. (Predicted band size: 28 kD; Observed band size: 29 kD)

STORAGE

Store at 4°C short term. For long term storage, store at -20°C, avoiding freeze/thaw cycles.

NOTE

For Research Use Only. Not for diagnostic, therapeutics, prophylactic or in vivo use.