

**DATASHEET**

**ABCE1 Rabbit Monoclonal Antibody(C1399)**

CAT. NO. AMA01011

**KEY FEATURES**

Target	ABCE1	Source / Host	Rabbit
Reactivity	Human, Mouse, Rat	Clonality	Monoclonal
Applications	WB	Conjugation	Unconjugated
Form / Buffer	Liquid in PBS, pH 7.4, containing 50% glycerol, 0.2% BSA and 0.01% sodium azide.	Storage	at-20°C

**BACKGROUND**

Nucleoside-triphosphatase (NTPase) involved in ribosome recycling by mediating ribosome disassembly involved in ribosome recycling by mediating ribosome disassembly . Able to hydrolyze ATP, GTP, UTP and CTP . Splits ribosomes into free 60S subunits and tRNA- and mRNA-bound 40S subunits . Acts either after canonical termination facilitated by release factors (ETF1/eRF1) or after recognition of stalled and vacant ribosomes by mRNA surveillance factors (PELO/Pelota) . Involved in the No-Go Decay (NGD) pathway: recruited to stalled ribosomes by the Pelota-HBS1L complex, and drives the disassembly of stalled ribosomes, followed by degradation of damaged mRNAs as part of the NGD pathway . Also plays a role in quality control of translation of mitochondrial outer membrane-localized mRNA .

**APPLICATION**

To ensure optimal assay performance, AREX recommends conducting reagent titration tailored to each testing system for optimal detection results.

WB	1:500 - 1:1000
----	----------------

\*Results are sample-specific. Please refer to your local assay conditions and test parameters for reference.

**PRODUCT OVERVIEW**

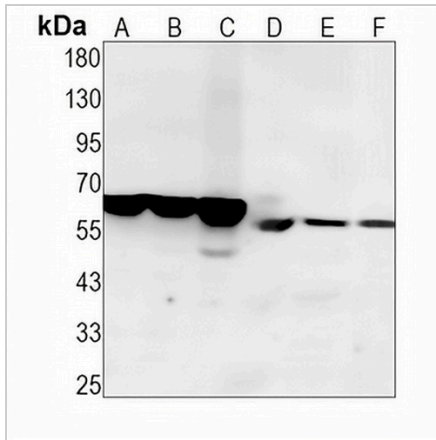
Description	Recombinant rabbit monoclonal antibody to ABCE1
Specificity	Recognizes endogenous levels of ABCE1 protein
Antibody Type	Primary antibody, Recombinant
Immunogen	KLH-conjugated synthetic peptide encompassing a sequence within human ABCE1 protein. The exact sequence is proprietary.
Purification	The antibody was purified by immunogen affinity chromatography.
Molecular Weight	Predicted: 67 kD; Observed: 67 kD
Form/Buffer	Liquid in PBS, pH 7.4, containing 50% glycerol, 0.2% BSA and 0.01% sodium azide.
Alternative Names	RLI; RNASEL1; RNASELI; RNS4I; ATP-binding cassette sub-family E member 1; 2'-5'-oligoadenylate-binding protein; HuHP68; RNase L inhibitor; Ribonuclease 4 inhibitor; RNS4I
Gene Symbol	ABCE1
Entrez Gene	6059(Human); 24015(Mouse)
SwissProt	P61221(Human); P61222(Mouse)

\*AREX continuously optimizes our products. Webpage content may not reflect the latest updates. For inquiries, please contact [info@arexbio.com](mailto:info@arexbio.com) or your local distributor.

\*Clone Number, Reactivity, Source/Host and Clonality can be found in the product name and Key Features section above.

**DATASHEET****ABCE1 Rabbit Monoclonal Antibody(C1399)**

CAT. NO. AMA01011

**DATA**

Western blot analysis of ABCE1 expression in HEK293T (A), A431 (B), K562 (C), mouse liver (D), mouse kidney (E), rat kidney (F) whole cell lysates. (Predicted band size: 67 kD; Observed band size: 67 kD)

**STORAGE**

Store at 4°C short term. For long term storage, store at -20°C, avoiding freeze/thaw cycles.

**NOTE**

For Research Use Only. Not for diagnostic, therapeutics, prophylactic or in vivo use.