

DATASHEET

RbAp48 Rabbit Monoclonal Antibody(C1413)

CAT. NO. AMA01025

KEY FEATURES

Target	RbAp48	Source / Host	Rabbit
Reactivity	Human, Mouse, Rat	Clonality	Monoclonal
Applications	WB, IF/ICC	Conjugation	Unconjugated
Form / Buffer	Liquid in PBS, pH 7.4, containing 50% glycerol, 0.2% BSA and 0.01% sodium azide.	Storage	at-20°C

BACKGROUND

Core histone-binding subunit that may target chromatin assembly factors, chromatin remodeling factors and histone deacetylases to their histone substrates in a manner that is regulated by nucleosomal DNA . Component of the chromatin assembly factor 1 (CAF-1) complex, which is required for chromatin assembly following DNA replication and DNA repair . Component of the core histone deacetylase (HDAC) complex, which promotes histone deacetylation and consequent transcriptional repression . Component of the nucleosome remodeling and histone deacetylase complex (the NuRD complex), which promotes transcriptional repression by histone deacetylation and nucleosome remodeling . Component of the PRC2 complex, which promotes repression of homeotic genes during development .

APPLICATION

To ensure optimal assay performance, AREX recommends conducting reagent titration tailored to each testing system for optimal detection results.

WB	1:500 - 1:1000
IF/ICC	1:50 - 1:200

*Results are sample-specific. Please refer to your local assay conditions and test parameters for reference.

PRODUCT OVERVIEW

Description	Recombinant rabbit monoclonal antibody to RbAp48
Specificity	Recognizes endogenous levels of RbAp48 protein
Antibody Type	Primary antibody, Recombinant
Immunogen	KLH-conjugated synthetic peptide encompassing a sequence within human RbAp48 protein. The exact sequence is proprietary.
Purification	The antibody was purified by immunogen affinity chromatography.
Molecular Weight	Predicted: 47 kD; Observed: 48 kD
Form/Buffer	Liquid in PBS, pH 7.4, containing 50% glycerol, 0.2% BSA and 0.01% sodium azide.
Alternative Names	RBAP48; Histone-binding protein RBBP4; Chromatin assembly factor 1 subunit C; CAF-1 subunit C; Chromatin assembly factor I p48 subunit; CAF-I 48 kDa subunit; CAF-I p48; Nucleosome-remodeling factor subunit RBAP48; Retinoblastoma-binding protein 4; RBBP-4; Retinoblastoma-binding protein p48
Gene Symbol	RBBP4
Entrez Gene	5928(Human); 19646(Mouse)
SwissProt	Q09028(Human); Q60972(Mouse)

*AREX continuously optimizes our products. Webpage content may not reflect the latest updates. For inquiries, please contact info@arexbio.com or your local distributor.

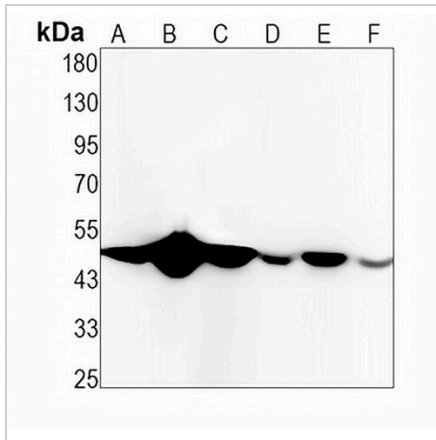
*Clone Number, Reactivity, Source/Host and Clonality can be found in the product name and Key Features section above.

DATASHEET

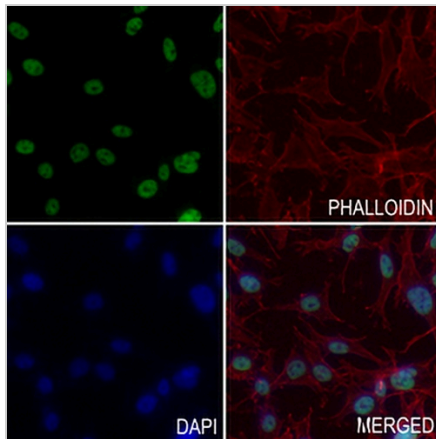
RbAp48 Rabbit Monoclonal Antibody(C1413)

CAT. NO. AMA01025

DATA



Western blot analysis of RbAp48 expression in HEK293T (A), K562 (B), Jurkat (C), mouse liver (D), mouse kidney (E), rat liver (F) whole cell lysates. (Predicted band size: 47 kD; Observed band size: 48 kD)



Immunofluorescent analysis of RbAp48 staining in MDAMB231 cells. Formalin-fixed cells were permeabilized with 0.1% Triton X-100 in TBS for 5-10 minutes and blocked with 3% BSA-PBS for 30 minutes at room temperature. Cells were probed with the primary antibody in 3% BSA-PBS and incubated overnight at 4 °C in a humidified chamber. Cells were washed with PBST and incubated with a AREX® Fluor 488 -conjugated secondary antibody (green) in PBS at room temperature in the dark. Phalloidin - AREX® Fluor 594 was used to stain Actin filaments (red). DAPI was used to stain the cell nuclei (blue).

STORAGE

Store at 4°C short term. For long term storage, store at -20°C, avoiding freeze/thaw cycles.

NOTE

For Research Use Only. Not for diagnostic, therapeutics, prophylactic or in vivo use.