

**DATASHEET**

**TMPRSS2 Rabbit Monoclonal Antibody(C1417)**

CAT. NO. AMA01029

**KEY FEATURES**

Target	TMPRSS2	Source / Host	Rabbit
Reactivity	Human, Mouse, Rat	Clonality	Monoclonal
Applications	WB	Conjugation	Unconjugated
Form / Buffer	Liquid in PBS, pH 7.4, containing 50% glycerol, 0.2% BSA and 0.01% sodium azide.	Storage	at-20°C

**BACKGROUND**

Plasma membrane-anchored serine protease that cleaves at arginine residues . Participates in proteolytic cascades of relevance for the normal physiologic function of the prostate . Androgen-induced TMPRSS2 activates several substrates that include pro-hepatocyte growth factor/HGF, the protease activated receptor-2/F2RL1 or matriptase/ST14 leading to extracellular matrix disruption and metastasis of prostate cancer cells . In addition, activates trigeminal neurons and contribute to both spontaneous pain and mechanical allodynia .

**APPLICATION**

To ensure optimal assay performance, AREX recommends conducting reagent titration tailored to each testing system for optimal detection results.

WB	1:500 - 1:1000
----	----------------

\*Results are sample-specific. Please refer to your local assay conditions and test parameters for reference.

**PRODUCT OVERVIEW**

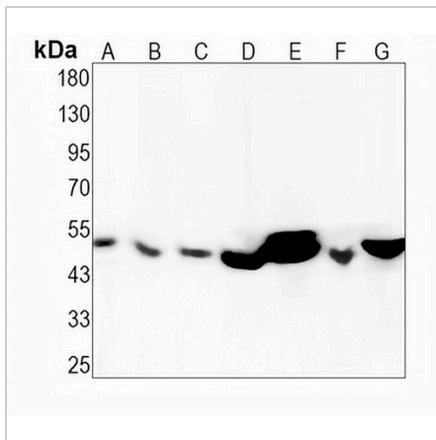
Description	Recombinant rabbit monoclonal antibody to TMPRSS2
Specificity	Recognizes endogenous levels of TMPRSS2 protein
Antibody Type	Primary antibody, Recombinant
Immunogen	KLH-conjugated synthetic peptide encompassing a sequence within human TMPRSS2 protein. The exact sequence is proprietary.
Purification	The antibody was purified by immunogen affinity chromatography.
Molecular Weight	Predicted: 53 kD; Observed: 53 kD
Form/Buffer	Liquid in PBS, pH 7.4, containing 50% glycerol, 0.2% BSA and 0.01% sodium azide.
Alternative Names	PRSS10; Transmembrane protease serine 2; Serine protease 10
Gene Symbol	TMPRSS2
Entrez Gene	7113(Human); 50528(Mouse)
SwissProt	O15393(Human); Q9JIQ8(Mouse)

\*AREX continuously optimizes our products. Webpage content may not reflect the latest updates. For inquiries, please contact [info@arexbio.com](mailto:info@arexbio.com) or your local distributor.

\*Clone Number, Reactivity, Source/Host and Clonality can be found in the product name and Key Features section above.

**DATASHEET****TMPRSS2 Rabbit Monoclonal Antibody(C1417)**

CAT. NO. AMA01029

**DATA**

Western blot analysis of TMPRSS2 expression in HEK293T (A), HepG2 (B), MCF7 (C), mouse liver (D), mouse kidney (E), rat liver (F), rat kidney (G) whole cell lysates. (Predicted band size: 53 kD; Observed band size: 53 kD)

**STORAGE**

Store at 4°C short term. For long term storage, store at -20°C, avoiding freeze/thaw cycles.

**NOTE**

For Research Use Only. Not for diagnostic, therapeutics, prophylactic or in vivo use.