

DATASHEET

Creatine Kinase B Rabbit Monoclonal Antibody(C1418)

CAT. NO. AMA01030

KEY FEATURES

Target	Creatine Kinase B	Source / Host	Rabbit
Reactivity	Human, Mouse, Rat	Clonality	Monoclonal
Applications	WB	Conjugation	Unconjugated
Form / Buffer	Liquid in PBS, pH 7.4, containing 50% glycerol, 0.2% BSA and 0.01% sodium azide.	Storage	at-20°C

BACKGROUND

Reversibly catalyzes the transfer of phosphate between ATP and various phosphogens (e.g. creatine phosphate) . Creatine kinase isoenzymes play a central role in energy transduction in tissues with large, fluctuating energy demands, such as skeletal muscle, heart, brain and spermatozoa (Probable). Acts as a key regulator of adaptive thermogenesis as part of the futile creatine cycle: localizes to the mitochondria of thermogenic fat cells and acts by mediating phosphorylation of creatine to initiate a futile cycle of creatine phosphorylation and dephosphorylation . During the futile creatine cycle, creatine and N-phosphocreatine are in a futile cycle, which dissipates the high energy charge of N-phosphocreatine as heat without performing any mechanical or chemical work .

APPLICATION

To ensure optimal assay performance, AREX recommends conducting reagent titration tailored to each testing system for optimal detection results.

WB	1:500 - 1:1000
----	----------------

*Results are sample-specific. Please refer to your local assay conditions and test parameters for reference.

PRODUCT OVERVIEW

Description	Recombinant rabbit monoclonal antibody to Creatine Kinase B
Specificity	Recognizes endogenous levels of Creatine Kinase B protein
Antibody Type	Primary antibody, Recombinant
Immunogen	KLH-conjugated synthetic peptide encompassing a sequence within human Creatine Kinase B protein. The exact sequence is proprietary.
Purification	The antibody was purified by immunogen affinity chromatography.
Molecular Weight	Predicted: 42 kD; Observed: 43 kD
Form/Buffer	Liquid in PBS, pH 7.4, containing 50% glycerol, 0.2% BSA and 0.01% sodium azide.
Alternative Names	CKBB; Creatine kinase B-type; B-CK; Creatine kinase B chain
Gene Symbol	CKB
Entrez Gene	1152(Human); 12709(Mouse); 24264(Rat)
SwissProt	P12277(Human); Q04447(Mouse); P07335(Rat)

*AREX continuously optimizes our products. Webpage content may not reflect the latest updates. For inquiries, please contact info@arexbio.com or your local distributor.

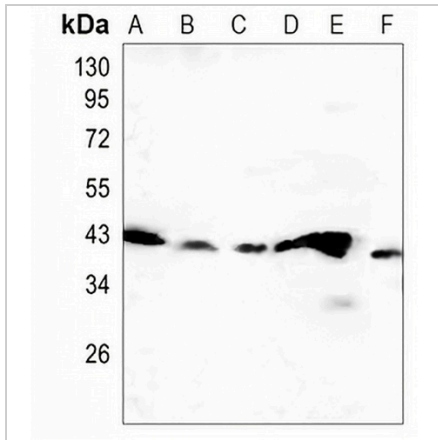
*Clone Number, Reactivity, Source/Host and Clonality can be found in the product name and Key Features section above.

DATASHEET

Creatine Kinase B Rabbit Monoclonal Antibody(C1418)

CAT. NO. AMA01030

DATA



Western blot analysis of Creatine Kinase B expression in K562 (A), HeLa (B), HepG2 (C), mouse kidney (D), mouse muscle (E), rat muscle (F) whole cell lysates. (Predicted band size: 42 kD; Observed band size: 43 kD)

STORAGE

Store at 4°C short term. For long term storage, store at -20°C, avoiding freeze/thaw cycles.

NOTE

For Research Use Only. Not for diagnostic, therapeutics, prophylactic or in vivo use.