

DATASHEET

Tropomyosin Rabbit Monoclonal Antibody(C1423)

CAT. NO. AMA01035

KEY FEATURES

Target	Tropomyosin	Source / Host	Rabbit
Reactivity	Human, Mouse, Rat	Clonality	Monoclonal
Applications	WB	Conjugation	Unconjugated
Form / Buffer	Liquid in PBS, pH 7.4, containing 50% glycerol, 0.2% BSA and 0.01% sodium azide.	Storage	at-20°C

BACKGROUND

Binds to actin filaments in muscle and non-muscle cells . Plays a central role, in association with the troponin complex, in the calcium dependent regulation of vertebrate striated muscle contraction . Smooth muscle contraction is regulated by interaction with caldesmon. In non-muscle cells is implicated in stabilizing cytoskeleton actin filaments.

APPLICATION

To ensure optimal assay performance, AREX recommends conducting reagent titration tailored to each testing system for optimal detection results.

WB	1:500 - 1:1000
----	----------------

*Results are sample-specific. Please refer to your local assay conditions and test parameters for reference.

PRODUCT OVERVIEW

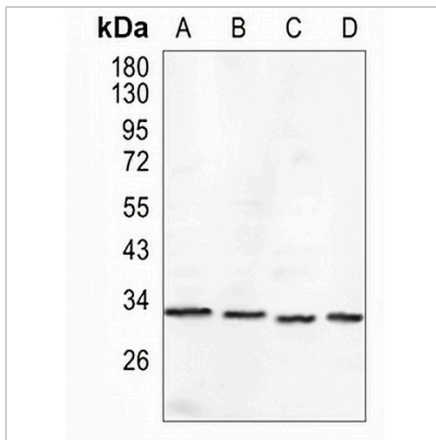
Description	Recombinant rabbit monoclonal antibody to Tropomyosin
Specificity	Recognizes endogenous levels of Tropomyosin protein
Antibody Type	Primary antibody, Recombinant
Immunogen	KLH-conjugated synthetic peptide encompassing a sequence within human Tropomyosin protein. The exact sequence is proprietary.
Purification	The antibody was purified by immunogen affinity chromatography.
Molecular Weight	Predicted: 32 kD; Observed: 33 kD
Form/Buffer	Liquid in PBS, pH 7.4, containing 50% glycerol, 0.2% BSA and 0.01% sodium azide.
Alternative Names	C15orf13; TMSA; Tropomyosin alpha-1 chain; Alpha-tropomyosin; Tropomyosin-1
Gene Symbol	TPM1
Entrez Gene	7168(Human); 22003(Mouse); 24851(Rat)
SwissProt	P09493(Human); P58771(Mouse); P04692(Rat)

*AREX continuously optimizes our products. Webpage content may not reflect the latest updates. For inquiries, please contact info@arexbio.com or your local distributor.

*Clone Number, Reactivity, Source/Host and Clonality can be found in the product name and Key Features section above.

DATASHEET**Tropomyosin Rabbit Monoclonal Antibody(C1423)**

CAT. NO. AMA01035

DATA

Western blot analysis of Tropomyosin expression in HepG2 (A), MCF7 (B), mouse muscle (C), rat muscle (D) whole cell lysates. (Predicted band size: 32 kD; Observed band size: 33 kD)

STORAGE

Store at 4°C short term. For long term storage, store at -20°C, avoiding freeze/thaw cycles.

NOTE

For Research Use Only. Not for diagnostic, therapeutics, prophylactic or in vivo use.