

DATASHEET

FHL-1 Rabbit Monoclonal Antibody(C1437)

CAT. NO. AMA01049

KEY FEATURES

Target	FHL-1	Source / Host	Rabbit
Reactivity	Human, Mouse, Rat	Clonality	Monoclonal
Applications	WB	Conjugation	Unconjugated
Form / Buffer	Liquid in PBS, pH 7.4, containing 50% glycerol, 0.2% BSA and 0.01% sodium azide.	Storage	at-20°C

BACKGROUND

May have an involvement in muscle development or hypertrophy.

APPLICATION

To ensure optimal assay performance, AREX recommends conducting reagent titration tailored to each testing system for optimal detection results.

WB	1:500 - 1:1000
----	----------------

*Results are sample-specific. Please refer to your local assay conditions and test parameters for reference.

PRODUCT OVERVIEW

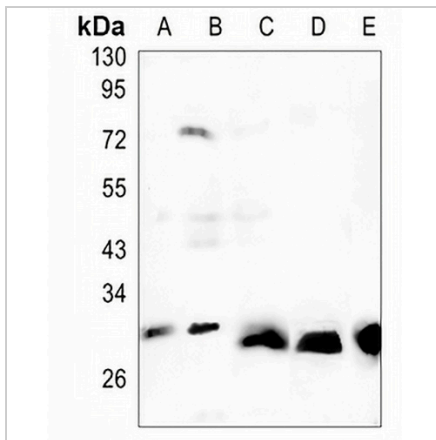
Description	Recombinant rabbit monoclonal antibody to FHL-1
Specificity	Recognizes endogenous levels of FHL-1 protein
Antibody Type	Primary antibody, Recombinant
Immunogen	KLH-conjugated synthetic peptide encompassing a sequence within human FHL-1 protein. The exact sequence is proprietary.
Purification	The antibody was purified by immunogen affinity chromatography.
Molecular Weight	Predicted: 36 kD; Observed: 36 kD
Form/Buffer	Liquid in PBS, pH 7.4, containing 50% glycerol, 0.2% BSA and 0.01% sodium azide.
Alternative Names	SLIM1; Four and a half LIM domains protein 1; FHL-1; Skeletal muscle LIM-protein 1; SLIM; SLIM-1
Gene Symbol	FHL1
Entrez Gene	2273(Human); 14199(Mouse); 25177(Rat)
SwissProt	Q13642(Human); P97447(Mouse); Q9WUH4(Rat)

*AREX continuously optimizes our products. Webpage content may not reflect the latest updates. For inquiries, please contact info@arexbio.com or your local distributor.

*Clone Number, Reactivity, Source/Host and Clonality can be found in the product name and Key Features section above.

DATASHEET**FHL-1 Rabbit Monoclonal Antibody(C1437)**

CAT. NO. AMA01049

DATA

Western blot analysis of FHL-1 expression in HeLa (A), Jurkat (B), PC3 (C), mouse muscle (D), rat muscle (E) whole cell lysates. (Predicted band size: 36 kD; Observed band size: 36 kD)

STORAGE

Store at 4°C short term. For long term storage, store at -20°C, avoiding freeze/thaw cycles.

NOTE

For Research Use Only. Not for diagnostic, therapeutics, prophylactic or in vivo use.