

DATASHEET

AP2-alpha-1 Rabbit Monoclonal Antibody(C1438)

CAT. NO. AMA01050

KEY FEATURES

Target	AP2-alpha-1	Source / Host	Rabbit
Reactivity	Human, Mouse, Rat	Clonality	Monoclonal
Applications	WB, IF/ICC	Conjugation	Unconjugated
Form / Buffer	Liquid in PBS, pH 7.4, containing 50% glycerol, 0.2% BSA and 0.01% sodium azide.	Storage	at-20°C

BACKGROUND

Component of the adaptor protein complex 2 (AP-2). Adaptor protein complexes function in protein transport via transport vesicles in different membrane traffic pathways. Adaptor protein complexes are vesicle coat components and appear to be involved in cargo selection and vesicle formation. AP-2 is involved in clathrin-dependent endocytosis in which cargo proteins are incorporated into vesicles surrounded by clathrin (clathrin-coated vesicles, CCVs) which are destined for fusion with the early endosome. The clathrin lattice serves as a mechanical scaffold but is itself unable to bind directly to membrane components.

APPLICATION

To ensure optimal assay performance, AREX recommends conducting reagent titration tailored to each testing system for optimal detection results.

WB	1:500 - 1:1000
IF/ICC	1:50 - 1:200

*Results are sample-specific. Please refer to your local assay conditions and test parameters for reference.

PRODUCT OVERVIEW

Description	Recombinant rabbit monoclonal antibody to AP2-alpha-1
Specificity	Recognizes endogenous levels of AP2-alpha-1 protein
Antibody Type	Primary antibody, Recombinant
Immunogen	KLH-conjugated synthetic peptide encompassing a sequence within human AP2-alpha-1 protein. The exact sequence is proprietary.
Purification	The antibody was purified by immunogen affinity chromatography.
Molecular Weight	Predicted: 107 kD; Observed: 108 kD
Form/Buffer	Liquid in PBS, pH 7.4, containing 50% glycerol, 0.2% BSA and 0.01% sodium azide.
Alternative Names	ADTAA; CLAPA1; AP-2 complex subunit alpha-1; 100 kDa coated vesicle protein A; Adapter-related protein complex 2 subunit alpha-1; Adaptor protein complex AP-2 subunit alpha-1; Alpha-adaptin A; Alpha1-adaptin; Clathrin assembly protein complex 2 alpha-A large chain; Plasma membrane adaptor HA2/AP2 adaptin alpha A subunit
Gene Symbol	AP2A1
Entrez Gene	160(Human); 11771(Mouse)
SwissProt	O95782(Human); P17426(Mouse)

*AREX continuously optimizes our products. Webpage content may not reflect the latest updates. For inquiries, please contact info@arexbio.com or your local distributor.

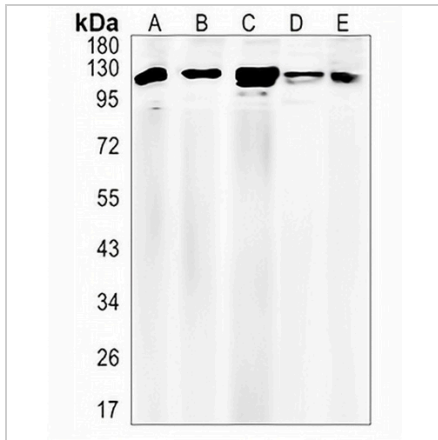
*Clone Number, Reactivity, Source/Host and Clonality can be found in the product name and Key Features section above.

DATASHEET

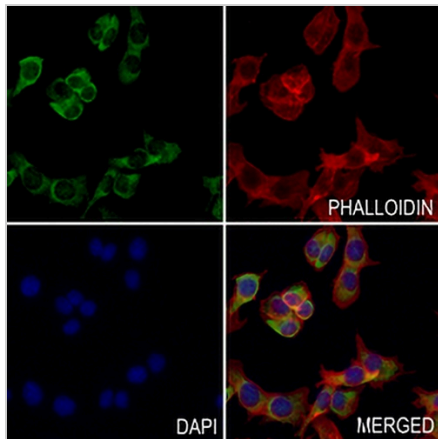
AP2-alpha-1 Rabbit Monoclonal Antibody(C1438)

CAT. NO. AMA01050

DATA



Western blot analysis of AP2-alpha-1 expression in K562 (A), HeLa (B), MCF7 (C), mouse muscle (D), rat muscle (E) whole cell lysates. (Predicted band size: 107 kD; Observed band size: 108 kD)



Immunofluorescent analysis of AP2-alpha-1 staining in MC38 cells. Formalin-fixed cells were permeabilized with 0.1% Triton X-100 in TBS for 5-10 minutes and blocked with 3% BSA-PBS for 30 minutes at room temperature. Cells were probed with the primary antibody in 3% BSA-PBS and incubated overnight at 4 °C in a humidified chamber. Cells were washed with PBST and incubated with a AREX® Fluor 488 -conjugated secondary antibody (green) in PBS at room temperature in the dark. Phalloidin - AREX® Fluor 594 was used to stain Actin filaments (red). DAPI was used to stain the cell nuclei (blue).

STORAGE

Store at 4°C short term. For long term storage, store at -20°C, avoiding freeze/thaw cycles.

NOTE

For Research Use Only. Not for diagnostic, therapeutics, prophylactic or in vivo use.