

**DATASHEET**

**CD66b Rabbit Monoclonal Antibody(C1440)**

CAT. NO. AMA01052

**KEY FEATURES**

Target	CD66b	Source / Host	Rabbit
Reactivity	Human	Clonality	Monoclonal
Applications	WB	Conjugation	Unconjugated
Form / Buffer	Liquid in PBS, pH 7.4, containing 50% glycerol, 0.2% BSA and 0.01% sodium azide.	Storage	at-20°C

**BACKGROUND**

Cell surface glycoprotein that plays a role in cell adhesion in a calcium-independent manner . Mediates heterophilic cell adhesion with other carcinoembryonic antigen-related cell adhesion molecules, such as CEACAM6 . Heterophilic interaction with CEACAM8 occurs in activated neutrophils .

**APPLICATION**

To ensure optimal assay performance, AREX recommends conducting reagent titration tailored to each testing system for optimal detection results.

WB	1:500 - 1:1000
----	----------------

\*Results are sample-specific. Please refer to your local assay conditions and test parameters for reference.

**PRODUCT OVERVIEW**

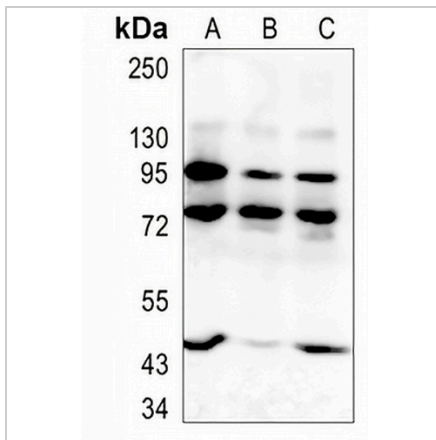
Description	Recombinant rabbit monoclonal antibody to CD66b
Specificity	Recognizes endogenous levels of CD66b protein
Antibody Type	Primary antibody, Recombinant
Immunogen	KLH-conjugated synthetic peptide encompassing a sequence within human CD66b protein. The exact sequence is proprietary.
Purification	The antibody was purified by immunogen affinity chromatography.
Molecular Weight	Predicted: 38 kD; Observed: 95 kD
Form/Buffer	Liquid in PBS, pH 7.4, containing 50% glycerol, 0.2% BSA and 0.01% sodium azide.
Alternative Names	CGM6; Carcinoembryonic antigen-related cell adhesion molecule 8; CD67 antigen; Carcinoembryonic antigen CGM6; Non-specific cross-reacting antigen NCA-95; CD66b
Gene Symbol	CEACAM8
Entrez Gene	1088(Human)
SwissProt	P31997(Human)

\*AREX continuously optimizes our products. Webpage content may not reflect the latest updates. For inquiries, please contact [info@arexbio.com](mailto:info@arexbio.com) or your local distributor.

\*Clone Number, Reactivity, Source/Host and Clonality can be found in the product name and Key Features section above.

**DATASHEET****CD66b Rabbit Monoclonal Antibody(C1440)**

CAT. NO. AMA01052

**DATA**

Western blot analysis of CD66b expression in K562 (A), H1792 (B), LO2 (C) whole cell lysates. (Predicted band size: 38 kD; Observed band size: 95 kD)

**STORAGE**

Store at 4°C short term. For long term storage, store at -20°C, avoiding freeze/thaw cycles.

**NOTE**

For Research Use Only. Not for diagnostic, therapeutics, prophylactic or in vivo use.